



CCD

MEDICAL DEVICES

**CATALOGUE
MEDICAL DEVICES**



Working in close collaboration with healthcare professionals and always striving to meet patients needs, **Laboratoire CCD** is happy to present its new catalogue to you.

Laboratoire CCD is a key leader in the areas of **Assisted Reproductive Technology, gynaecology and obstetrics**, developing a wide range of medical devices, pharmaceuticals and dietary supplements promoting innovation in women's health.

More than fifty years of experience in the development and manufacturing of medical devices have earned us the recognition of gynaecology and human reproduction specialists in France and throughout the world.

Laboratoire CCD is reaffirming its ongoing commitment to offer you better products and services:

Most of our products are **manufactured in France**, at our plant in Neuilly-en-Thelle (Oise, FRANCE). Our R&D team develops Frenchmade products with the required expertise in **all aspects of manufacturing and good practices**.

This know-how has allowed us to keep expanding our product development into ever more technical and demanding areas, using materials of the highest medical quality.

Our mission is to offer to our customers the best in terms of quality, performance, reliability and value. Whether for our latest developments or for devices that have become international references, it is our constant desire to support changes in protocols developed by the best teams of clinicians and propose to them the best tools.

Our daily mission: to provide care to women and accompany them through each phase of their lives.

For more detailed information, please contact your local representative or:

International Sales Department

Tél. + 33 (0) 1 44 95 17 00
Fax + 33 (0) 1 44 95 14 90
customer-service@ccdlab.com

Laboratoire CCD

48 rue des Petites Ecuries
75010 Paris - France
infomed@ccdlab.com
www.ccd-lab.com



Sterilization	4
French design and manufacturing.....	5
Certifications	6
CE marking and symbols, brands and size measurements	7
Alphabetical Index.....	44

ASSISTED REPRODUCTIVE TECHNOLOGY

Follicular puncture	10
OPS® ART of CCD® sets	10
HOC® ART of CCD® sets	10
HOC®2 ART of CCD®	10
OPS® Classic sets	11
HOC® Classic sets.....	11
HOC®2 Classic set	11
Ovo® ART of CCD® needle	12
Classic Ovo® needle.....	12
Embryo transfer	13
1 piece	
Inventcath Eco.....	13
Frydman® Classic	13
Frydman® Memory	13
Mock catheter	14
2 pieces	
Echogyn® Embryoview M.....	14
Frydman® Ultrasoft	15
Frydman® Ultrasoft Echo.....	15
Ultrasoft Frydman® Set.....	16
Ultrasoft Frydman® Set Echo	16
Pearl Tip Classic.....	17
Pearl Tip Soft.....	17
Classic Ultrasoft	18
3 pieces	
Ultrasoft Frydman® Set with Guide	19
Ultrasoft Frydman® Set Echo with Guide	19
Short Frydman® Set.....	20
Full Echo®	20
Full Echo® Pro	21
Seren-ET®	22
Frydman® Soft with stylet.....	23
TDT® set	23
Intrauterine insemination	24-25
Intrauterine insemination catheters	24-25
Hühner Test and accessories	26
Spirette® and Mucat®	26
OPS® and HOC® vials.....	26

FUNCTIONAL EXPLORATION OF THE FEMALE REPRODUCTIVE SYSTEM

Hysterosalpingography	30
Rigister®	30
Sliding Rigister®	31
Bloc Connector	31
Sonohysterography	32
Siscone®	32
Rudigoz catheter	33
Endometrial biopsy	34
Pipelle®	34
Pipelle® Mark II	34
Pipelle H	35
Endometrial smear	36
Endobrush®	36
Cervical smear	36
Duo-Brush®	36
Scrinet®	37
Functional exploration	37
Cusco speculum	38
Flexible hystrometer	39
Progressive dilator	39
Retrievette	40
Endovaginal probe covers	40

OBSTETRICS

Amniocentesis and cordocentesis	42
Needles for amniocentesis and cordocentesis	42
Chorionic villus sampling	43
CVS set	43
Blache needle	43
Accessories	44
ABC system	44
Amniopic®	44

Sterilization



Radiation

Radiation sterilization is used for all devices destined for Assisted Reproductive Technology (ART). STERILE R

Reproductive cells (sperm and eggs) or embryos are particularly sensitive to their environment, the Laboratoire CCD chose this technique to ensure that the sterilisation of the devices will have no impact on the survival and development of the cells.

Radiation sterilization consists in exposing the products to radiation. This technique ensures the complete absence of residual cytotoxic compounds, but may cause problems related to the degradation of certain materials.

For this reason, it cannot be used for all devices.

Ethylene oxide

Ethylene oxide (EO) is used for devices in contact with adult patients. STERILE EO

Products sterilised by EO must undergo an aeration cycle to eliminate gas residues. The quantity of residue is precisely controlled and must comply with international standards for acceptable dose limit.

French design and manufacturing

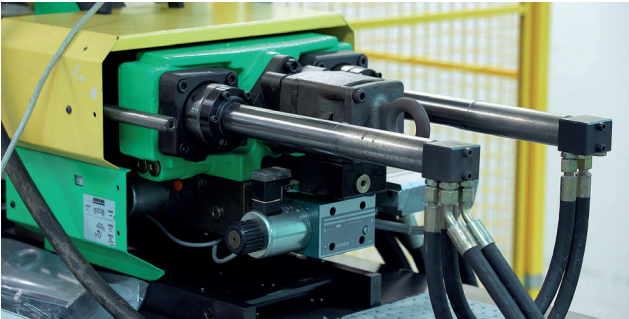
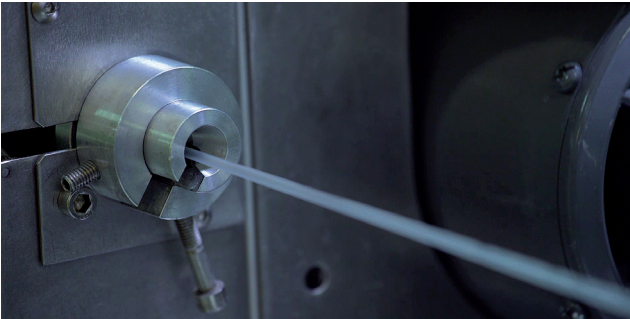
The products sold by the Laboratoire CCD are manufactured mainly in France.



R&D teams are constantly developing innovative products to meet user needs.



The products are regularly inspected during the manufacturing process. For some products, inspection is carried out on 100% of them.



The plant manages all production techniques: extrusion, moulding and overmoulding.

Certifications

■ Certificates of conformity with requirements of international standards



CERTIFICAT
CERTIFICATE OF REGISTRATION
N° 29552 rev. 3

GMED certifie que le système de management de la qualité développé par
GMED certifies that the quality management system developed by

LABORATOIRE CCD
48 rue des Petites Ecuries
75010 PARIS FRANCE

pour les activités
for the activities

Fabrication, commercialisation et distribution de dispositifs médicaux de gynécologie incluant l'insémination Artificielle (IA), la Fécondation In Vitro (FIV), l'Exploration Fonctionnelle, le Dépistage Anténatal, la Radiologie, le Dépistage du Cancer, la Contraception et les accessoires obstétricaux. Distribution de dispositifs médicaux de gynécologie incluant l'Interruption Volontaire de Grossesse (IVG).
Manufacturing, sales and distribution of medical devices for gynaecology and including Artificial Insemination (AI), In-Vitro Fertilization (IVF), Functional Exploration, Antenatal Detection, Radiology, Cancer Screening and Sampling, Contraception and obstetric accessories. Distribution of medical devices for gynaecology and including Elective Termination of Pregnancy.

réalisées sur le(s) site(s) de
performed on the location(s) of

Laboratoire CCD
 48 rue des Petites Ecuries 75010 Paris FRA

est conforme aux exigences des normes internationales
complies with the requirements of the international standards

ISO 13485 : 2016 - NF EN ISO 13485 : 2016

Début de validité / Effective date : September 19th, 2019 (included)
 Valable jusqu'au / Expiry date : July 29th, 2021 (included)
 Etabli le / Issued on : September 19th, 2019





On behalf of the President
Béatrice LYS
 Technical Director

GMED N° 29552-3
 Ce certificat est délivré selon les règles de certification GMED / This certificate is issued according to the rules of GMED certification
 Modifie le certificat 29552-2

GMED • Société par Actions Simplifiée au capital de 300 000 € • Organisme Notifié/Notified Body n° 0459
 Siège social : 1, rue Gaston Boissier - 75015 Paris • Tél. : 01 40 43 37 00 • gmed.fr

ISO 13485: 2016
 NF EN ISO 13485: 2016

■ CE certifications



ATTESTATION / CERTIFICATE N° 31674 rev. 3
 Délivré à Paris le 1^{er} octobre 2019
 Issued in Paris on October 1st, 2019

ATTESTATION CE / EC CERTIFICATE
Approbation du Système d'assurance Qualité de la Production/Approval of Production Quality Assurance System

ANNEXE V point 3 Directive 93/42/CEE relative aux dispositifs médicaux
 ANNEX V section 3 DIRECTIVE 93/42/EEC concerning medical devices
 Pour les dispositifs de classe IIb ou III, un certificat CE de type est requis
 For class IIb or III devices, a CE type certificate is required

Fabricant / Manufacturer
LABORATOIRE CCD
48 rue des Petites Ecuries
75010 PARIS FRANCE

Catégorie du(des) dispositif(s) / Device(s) category
Seringues de fécondation in vitro et insémination artificielle
Insemination artificial and in vitro fertilization syringes

Voir détails sur addendum
 See attachment for additional information

GMED atteste qu'à l'examen des résultats figurant dans le rapport référencé P177403 - P600974, le système d'assurance qualité - pour la production et le contrôle final - des dispositifs médicaux énumérés ci-dessus est conforme aux exigences de l'annexe V point 3 de la Directive 93/42/CEE.
 GMED certifies that, on the basis of the results contained in the file referenced P177403 - P600974, the quality system - for manufacturing and final inspection - of medical devices listed here above complies with the requirements of the Directive 93/42/EEC, annex V section 3.

La validité du présent certificat est soumise à une vérification périodique ou imprévue
 The validity of the certificate is subject to periodic or unexpected verification

Début de validité / Effective date : October 11th, 2019 (included)
 Valable jusqu'au / Expiry date : May 26th, 2024 (included)



On behalf of the President
Béatrice LYS
 Technical Director

GMED N° 31674 rev. 3
 Renouvele le certificat 31674-2

GMED • Société par Actions Simplifiée au capital de 300 000 € • Organisme Notifié/Notified Body n° 0459
 Siège social : 1, rue Gaston Boissier - 75015 Paris • Tél. : 01 40 43 37 00 • gmed.fr

In vitro fertilisation and artificial insemination syringes



ATTESTATION / CERTIFICATE N° 33218 rev. 6
 Délivré à Paris le 25 novembre 2019
 Issued in Paris on November 25th, 2019

ATTESTATION CE / EC CERTIFICATE
Approbation du Système d'assurance Qualité de la Production/Approval of Production Quality Assurance System

ANNEXE V point 3 Directive 93/42/CEE relative aux dispositifs médicaux
 ANNEX V section 3 DIRECTIVE 93/42/EEC concerning medical devices
 Pour les dispositifs de classe IIb ou III, un certificat CE de type est requis
 For class IIb or III devices, a CE type certificate is required

Fabricant / Manufacturer
LABORATOIRE CCD
48 rue des Petites Ecuries
75010 PARIS FRANCE

Catégorie du(des) dispositif(s) / Device(s) category
Dispositifs médicaux stériles et non stériles pour l'Assistance Médicale à la Procréation.
Sterile and non sterile medical devices for Assisted Reproductive Techniques

Voir détails sur addendum
 See attachment for additional information

GMED atteste qu'à l'examen des résultats figurant dans le rapport référencé P177403 - P600974, le système d'assurance qualité - pour la production et le contrôle final - des dispositifs médicaux énumérés ci-dessus est conforme aux exigences de l'annexe V point 3 de la Directive 93/42/CEE.
 GMED certifies that, on the basis of the results contained in the file referenced P177403 - P600974, the quality system - for manufacturing and final inspection - of medical devices listed here above complies with the requirements of the Directive 93/42/EEC, annex V section 3.

La validité du présent certificat est soumise à une vérification périodique ou imprévue
 The validity of the certificate is subject to periodic or unexpected verification

Début de validité / Effective date : November 25th, 2019 (included)
 Valable jusqu'au / Expiry date : May 26th, 2024 (included)



On behalf of the President
Béatrice LYS
 Technical Director

GMED N° 33218 rev. 6
 Modifie le certificat 33218-6

GMED • Société par Actions Simplifiée au capital de 300 000 € • Organisme Notifié/Notified Body n° 0459
 Siège social : 1, rue Gaston Boissier - 75015 Paris • Tél. : 01 40 43 37 00 • gmed.fr

Sterile and non-sterile medical devices for Assisted Reproductive Technology



ATTESTATION / CERTIFICATE N° 29551 rev. 7
 Délivré à Paris le 31 octobre 2019
 Issued in Paris on October 31st, 2019

ATTESTATION CE / EC CERTIFICATE
Approbation du Système d'assurance Qualité de la Production (Sterile + fabrication et en maintien de l'état stérile)
Approval of Production Quality Assurance System (sterile + fabrication and maintaining sterile conditions)

ANNEXE V point 3 Directive 93/42/CEE relative aux dispositifs médicaux
 ANNEX V section 3 DIRECTIVE 93/42/EEC concerning medical devices

Fabricant / Manufacturer
LABORATOIRE CCD
48 rue des Petites Ecuries
75010 PARIS FRANCE

Catégorie du(des) dispositif(s) / Device(s) category
Dispositifs médicaux stériles pour l'Assistance Médicale à la Procréation.
Sterile medical devices for Assisted Reproductive Techniques.

Voir détails sur addendum / See attachment for additional information

GMED atteste qu'à l'examen des résultats figurant dans le rapport référencé P177403 - P600974, le système d'assurance qualité - pour fabrication et le maintien de l'état stérile - des dispositifs médicaux énumérés ci-dessus est conforme aux exigences de l'annexe V point 3 de la Directive 93/42/CEE.
 GMED certifies that, on the basis of the results contained in the file referenced P177403 - P600974, the quality system - for the quality system for securing and maintaining sterile conditions - of medical devices listed here above complies with the requirements of the Directive 93/42/EEC, annex V section 3.

La validité du présent certificat est soumise à une vérification périodique ou imprévue
 The validity of the certificate is subject to periodic or unexpected verification

Début de validité / Effective date : October 11th, 2019 (included)
 Valable jusqu'au / Expiry date : May 26th, 2024 (included)



Lionel DREUX
 Certification Director

GMED N° 29551 rev. 7
 Annule et remplace le certifié 29551-6











GMED • Société par Actions Simplifiée au capital de 300 000 € • Organisme Notifié/Notified Body n° 0459
 Siège social : 1, rue Gaston Boissier - 75015 Paris • Tél. : 01 40 43 37 00 • gmed.fr

Sterile medical devices for Assisted Reproductive Technology

These certificates are available on request by email to contact@ccd-lab.com

CE marking and symbols

Used on packaging

 CE-marked device	 Date of manufacture
 Single use - Do not reuse	 Expiry date
 Read leaflet before use	REF Device reference
STERILE R Device sterilised by radiation	LOT Batch code
STERILE EO Device sterilised with ethylene oxide	 Protect from moisture
 Non-sterile	 Keep away from light and the sun
 Manufacturer	 Do not use if the wrapping or primary packaging is damaged

Brands

The following brand names are registered and are the property of the Laboratoire CCD:

Amniopic	Endobrush	Endocyte	Mucat
Full Echo	HOC**	Pearl Tip	Siscone
OPS	Rigister**	Scrinet**	Pipelle
Spirette	TDT	Echogyn*	
ART of CCD	Duo-Brush	Frydman	

Size measurements

French gauge system

The gauge of instruments used was defined for the first time in 1849 by Charrière, a French manufacturer of surgical instruments. Used in the United States, the Charrière scale became the “French” system (F or Fr).

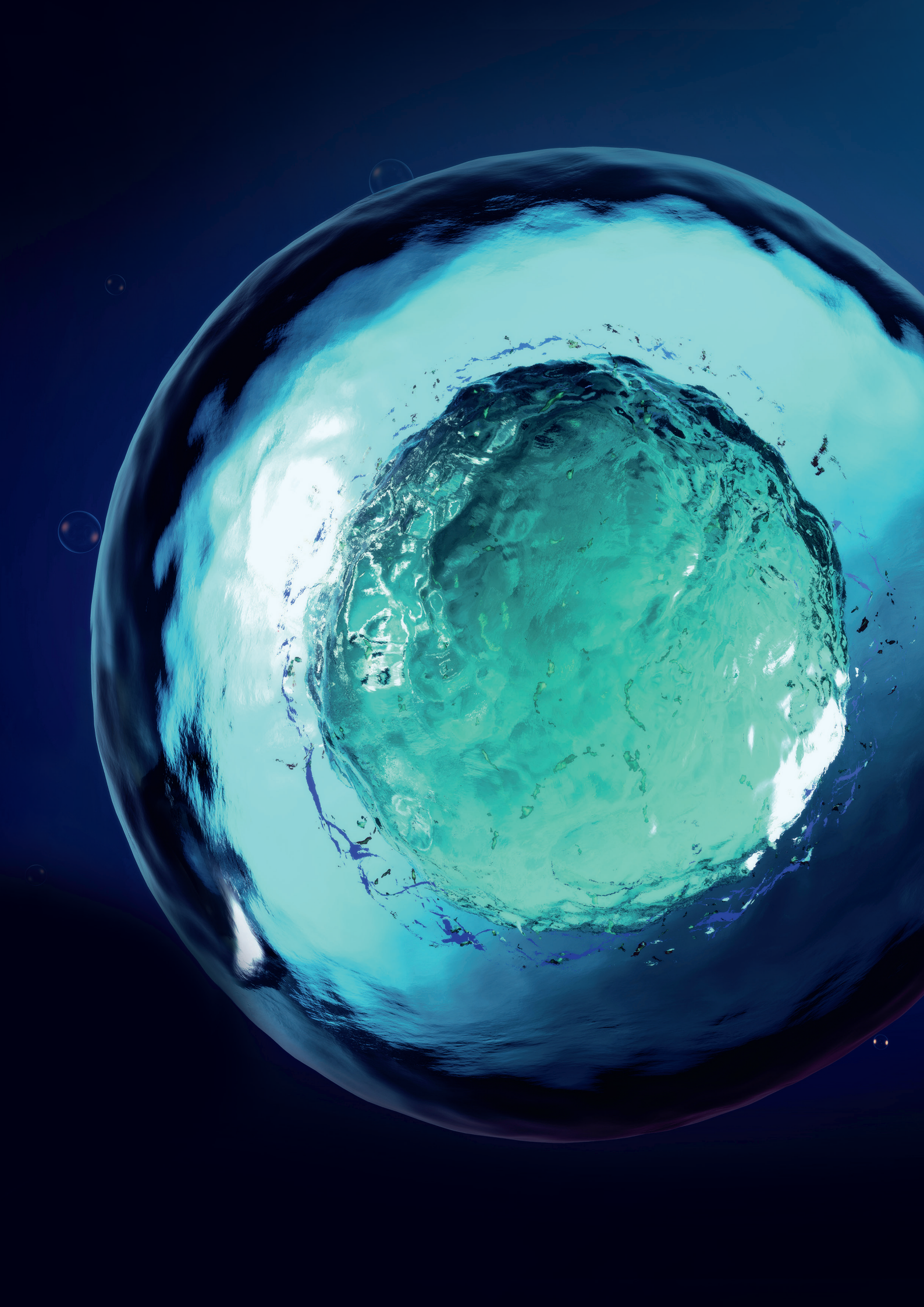
- Charrière (Ch) or French (F/Fr) scale: 1 Ch = 1 F = 1/3 mm

Gauge

For needles, the diameter is often expressed in Gauge. The diameter in gauge corresponds to the maximum number of needles or catheters that can be introduced in a standard tube: 22 needles of size 22 gauge can be placed in the standard.

* PATRICK CHOAY S.A (PCSA) property

** PRODIMED property



ART

Assisted Reproductive Technology

For more than fifty years, Laboratoire CCD has been working in partnership with doctors and biologists to help couples who wish to have children.

From insemination catheters to embryo transfer catheters, and follicular puncture sets, Laboratoire CCD does its best to offer high-quality and innovative products in line with technical advancements and best practices.



Follicular puncture

OPS® and HOC® ART of CCD® sets

STERILE R

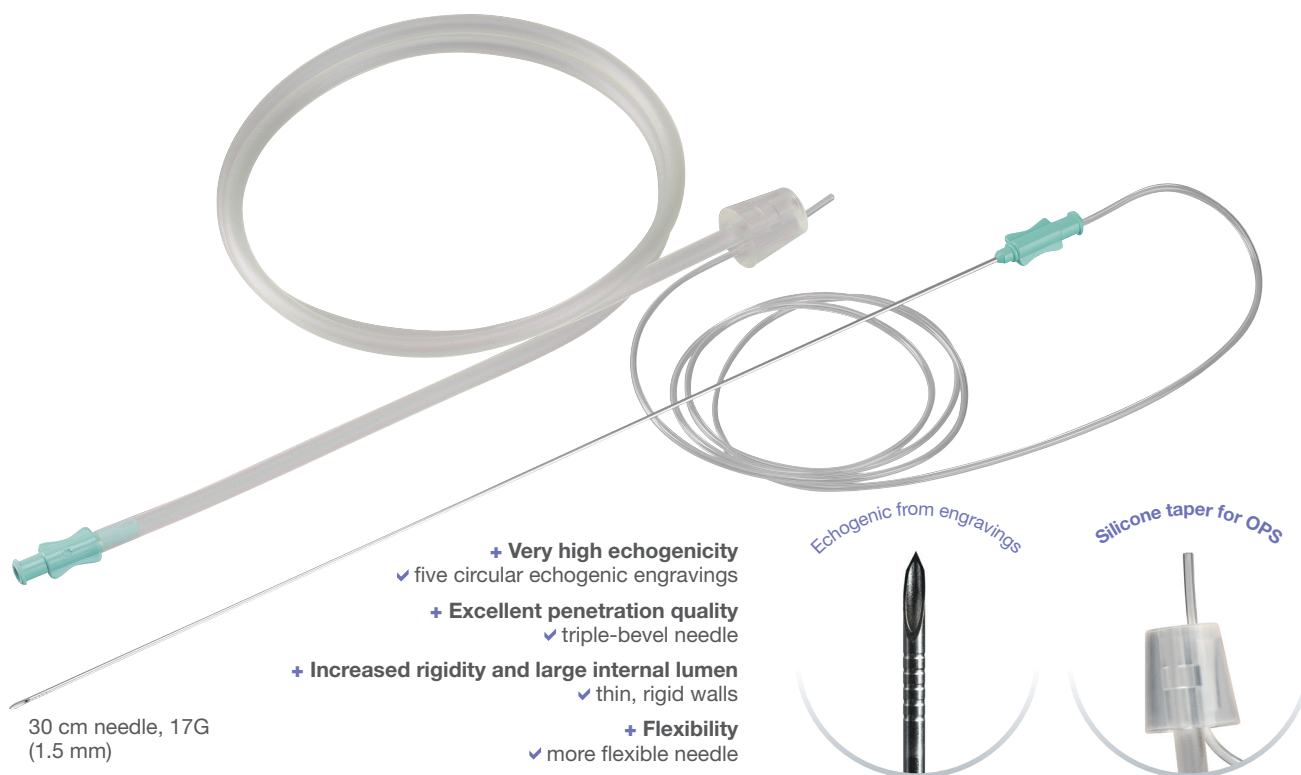


Pre-connected sets for follicular puncture

- **Composition:**
 - ART of CCD high-quality needle. Single-lumen, triple bevel and echogenic with engravings.
 - Kink-resistant polyurethane tubes.
 - Caps ensuring vials are leakproof during collection.
- **Benefits:**
 - The ART of CCD sets limit the risk of fracturing the zona pellucidan (follicular puncture using pump for better control of aspiration).
 - ART needles for enhanced ultrasound monitoring and easier insertion into tissue.
- **Versions:**
 - OPS, HOC, HOC2
 - With or without tap (the 3-way tap designed for rinsing and flushing the needle).



3-way tap
 ✓ 2 versions:
 with or without tap



Product Name	Order Reference	Internal Reference	Tap	Needle			Aspiration tubing			Cap		Packaging
				Type	Length	Diam.	Length	Ø Int.	Ø Ext.	Type	Compatibility	
OPS ART of CCD	1313101	7002639	No	ART (engraving tip)	30 cm	17 G	100 cm	1.1 mm	2 mm	Silicone cone	15 ml Falcon type vial	10/box
	1313201	7002640	Yes									
HOC ART of CCD	1313301	7002641	No	ART (engraving tip)	30 cm	17 G	100 cm	1.1 mm	2 mm	Screwing	HOC Flacon	5/box
	1313401	7002642	Yes									
HOC2 ART of CCD	1313501	7002643	No	ART (engraving tip)	30 cm	17 G	100 cm	1.1 mm	2 mm	Soft cone	HOC Flacon	5/box

Class IIa medical devices. Manufacturer: Laboratoire CCD - CE0459. Carefully read the instructions on the labelling. Use before the expiry date indicated on the wrapping. Do not use if the wrapping or primary packaging is damaged.



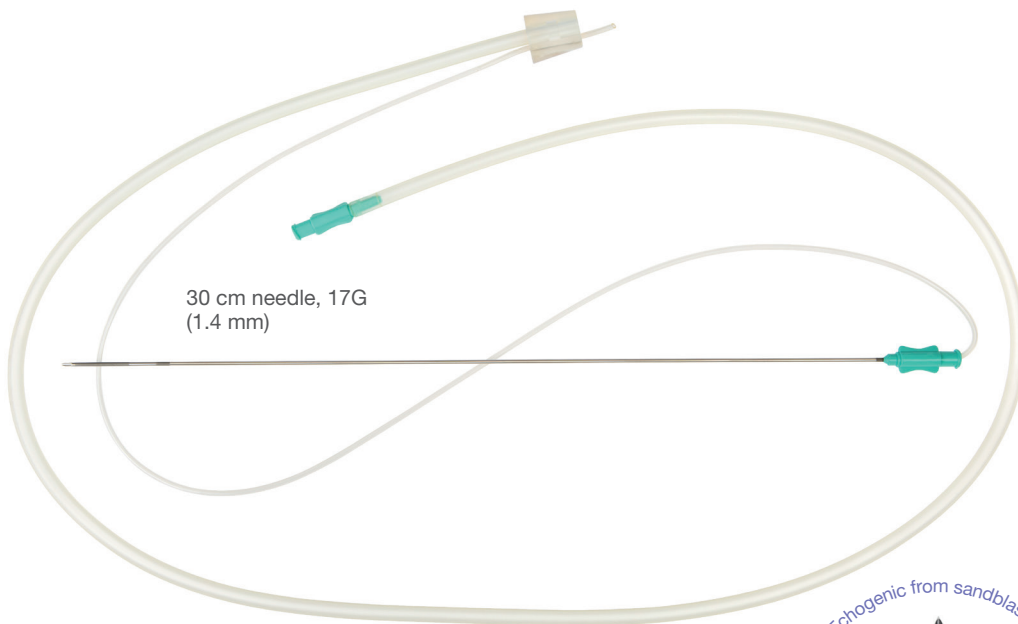
OPS® and HOC® Classic sets STERILE R

Premium pre-connected sets for follicular puncture

- **Composition:**
 - Classic needle. Single-lumen, double-bevel and echogenic due to sandblasting.
 - Kink-resistant polyurethane tubes.
 - Caps ensuring vials are leakproof during collection.
- **Benefits:**
 - The Classic sets limit the risk of fracturing the zona pellucida (follicular puncture using pump for better control of aspiration).
- **Versions:**
 - OPS, HOC, HOC2
 - With or without tap (the 3-way tap designed for rinsing and flushing the needle).



3-way tap
✓ 2 versions:
with or without tap



30 cm needle, 17G
(1.4 mm)

- + **High echogenicity**
✓ sandblasted tip
- + **High penetration quality**
✓ double-bevel needle
- + **Large internal lumen**
✓ thin walls

Echogenic from sandblasting



Silicone taper for HOC



Product Name	Order Reference	Internal Reference	Tap	Needle			Aspiration tubing			Cap		Packaging
				Type	Length	Diam.	Length	Ø Int.	Ø Ext.	Type	Compatibility	
OPS Classic	7005722	7005722	Yes	Classic (sandblasted tip)	30 cm	17 G	100 cm	1.1 mm	2 mm	Silicone cone	15 ml Falcon type vial	10/box
	7005723	7005723	No		35 cm	17 G	100 cm					
	7005414	7005414	No									
	7005413	7005413	Yes									
HOC Classic	7005716	7005716	Yes	Classic (sandblasted tip)	30 cm	17 G	100 cm	1.1 mm	2 mm	Screwing	HOC vial	5/box
	7005720	7005720	No									
HOC2 Classic	7005721	7005721	No	Classic (sandblasted tip)	30 cm	17 G	100 cm	1.1 mm	2 mm	Soft cone	HOC vial	5/box

Class IIa medical device. Manufacturer: Laboratoire CCD - CE0459. Carefully read the instructions on the labelling. Use before the expiry date indicated on the wrapping. Do not use if the wrapping or primary packaging is damaged.



Ovo ART of CCD® and Classic needle

STERILE R



Needles with advanced technology for egg retrieval

Ovo ART of CCD needle



- **Composition:**
 - Single-lumen, triple bevel needle, highly echogenic with engravings.
 - Luer-Lock tip.
- **Benefits:**
 - High-quality steel facilitating handling and sliding.
 - Triple-bevel to easily penetrate tissue.
 - Very high echogenicity for better control.

Classic needle

- **Composition:**
 - Single-lumen, double-bevel needle, echogenic due to sandblasting.
 - Luer-Lock tip



Two needle versions

ART of CCD® version	Classic version
 <ul style="list-style-type: none"> + Very high echogenicity <ul style="list-style-type: none"> ✓ five circular echogenic engravings + Excellent penetration quality <ul style="list-style-type: none"> ✓ triple-bevel needle + Increased rigidity and large internal lumen <ul style="list-style-type: none"> ✓ thin, rigid walls + Flexibility <ul style="list-style-type: none"> ✓ more flexible needle 	 <ul style="list-style-type: none"> + High echogenicity <ul style="list-style-type: none"> ✓ sandblasted tip + High penetration quality <ul style="list-style-type: none"> ✓ double-bevel needle + Large internal lumen <ul style="list-style-type: none"> ✓ thin walls

Product Name	Order Reference	Internal Reference	Total length	Echogenicity	Needle Int. Ø	Needle Ext. Ø	Packaging
Ovo needle ART of CCD	1313701	7002645	30 cm	Engraving	1.0 mm	1.4 mm 17G	10/box
Ovo Classic needle	1403002	7002692	25 cm	Sandblasting	1.2 mm	1.5 mm 17G	10/box
	1403001	7002691	30 cm	Sandblasting	1.2 mm	1.5 mm 17G	10/box

Class IIa medical device. Manufacturer: Laboratoire CCD - CE0459. Carefully read the instructions on the labelling. Use before the expiry date indicated on the wrapping. Do not use if the wrapping or primary packaging is damaged.



Catheter 1 piece

Inventcath Eco STERILE R

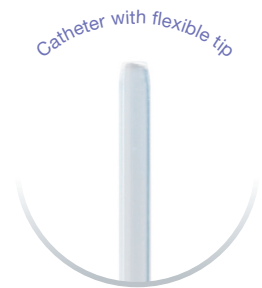
- Catheter with pre-curved end, to facilitate passage through cervixes with difficult access.
- Proximal tip markings for better positioning and locating of the distal curve.



Product Name	Order Reference	Internal Reference	Type	Length	Ø Ext.	Ø Int.	Echogenic	Packaging
Inventcath Eco	1320121	7002647	Curved	19 cm	1.6 mm	1.15 mm	No	20/box

Frydman® Classic STERILE R

The first catheter sold by CCD. The original catheter for embryo transfer, with flexible tip.



Product Name	Order Reference	Internal Reference	Type	Length	Ø Ext.	Ø Int.	Echogenic	Packaging
Frydman Classic 4.5	1306045	7002630	Straight	18 cm	1.6 mm	1.15 mm	No	25/box
Frydman Classic 5.5	1306055	7002631	Straight	19 cm	1.6 mm	1.15 mm	No	25/box

Frydman® Memory STERILE R

Basic malleable catheter

- 1-piece catheter to transfer embryos with minimal handling
- The malleable catheter can be curved to adapt its shape according to the cervical profile, for insertion into very narrow or complex cervixes.



Product Name	Order Reference	Internal Reference	Type	Length	Ø Ext.	Ø Int.	Echogenic	Packaging
Frydman Memory	130MF45	7002735	Malleable	18 cm	2.10 mm	1.10 mm	No	10/box

Class I sterile medical devices. Manufacturer: Laboratoire CCD - CE0459. Carefully read the instructions on the labelling. Use before the expiry date indicated on the wrapping. Do not use if the wrapping or primary packaging is damaged.



Embryo transfer

Catheter 1 piece

Trial transfer catheter - Mock Catheter

STERILE R

Catheter with flexible tip



- Composition:
 - Trial catheter with a flexible extremity in polyethylene, closed.



Product Name	Order Reference	Internal Reference	Insertion sheath		Catheter			Echogenic	Packaging
			Length	Ø Ext.	Length	Ø Ext.	Ø Int.		
Mock catheter	1322901	7002653	13.8 cm	2.6 mm	18 cm	1.6 mm	1.15 mm	No	25/box

Catheter 2 pieces

Echogyn® Embryoview M

STERILE R

Echogenic insert at tip



2-pieces set for embryo transfer with echogenic insert

- Composition:
 - Supported, flexible catheter with echogenic insert at its end for ultrasound monitoring.
 - FEP (fluoroethylene propylene) insertion sheath for improved sliding.



Product Name	Order Reference	Internal Reference	Insertion sheath		Catheter			Echogenic	Packaging
			Length	Ø Ext.	Length	Ø Ext.	Ø Int.		
Echogyn Embryoview M 18 cm	1325901	7002675	13 cm	2.3 mm	21 cm	1.57 mm	0.55 mm	Yes	10/box
Echogyn Embryoview M 23 cm	1325701	7002673	18 cm	2.3 cm	26 cm	1.57 mm	0.45 mm	Yes	10/box

Trial transfer catheters are available separately.

Trial transfer catheter presents similar features to the real transfer catheters, but its extremity is closed and its base is green.

Product Name	Order Reference	Internal Reference	Insertion sheath		Catheter			Echogenic	Packaging
			Length	Ø Ext.	Length	Ø Ext.	Ø Int.		
Echogyn Embryoview M Mock 18 cm	1326001	7002676	18 cm	2.3 mm	23 cm	1.57 mm	0.55 mm	Yes	10/box
Echogyn Embryoview M Mock 23 cm	1325801	7002674	18 cm	2.3 cm	26 cm	1.57 mm	0.45 mm	Yes	10/box



Class I sterile medical devices. Manufacturer: Laboratoire CCD - CE0459. Carefully read the instructions on the labelling. Use before the expiry date indicated on the wrapping. Do not use if the wrapping or primary packaging is damaged.

Reference available only for US



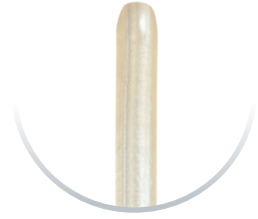
Catheter 2 pieces

Frydman® Ultrasoft STERILE R

2-pieces set for embryo transfer with ultra-flexible catheter

▪ **Composition:**

- Ultra-flexible catheter
- Catheter supported on its proximal end to facilitate handling.
- Stylet sold separately to increase rigidity, curve and protect the insertion sheath during passage into the cervix.



Product Name	Order Reference	Internal Reference	Insertion sheath		Catheter			Echogenic	Packaging
			Length	Ø Ext.	Length	Ø Ext.	Ø Int.		
Frydman Ultrasoft	1324201	7002665	18 cm	2.2 mm	21.5 cm	1.55 mm	0.7 mm	No	10/box
Stylet for Frydman Soft Ultrasoft	1320701	7002648	18.8 cm	1.6 mm	N/A	N/A	N/A	N/A	10/box

Frydman® Ultrasoft Echo STERILE R

2-pieces set for embryo transfer with ultra-flexible catheter and echogenic ring

▪ **Composition:**

- Ultra-flexible catheter with echogenic ring at the tip for better control.
- Catheter supported on its proximal end to facilitate handling.
- Stylet sold separately to increase rigidity, curve and protect the insertion sheath during passage into the cervix.



Product Name	Order Reference	Internal Reference	Insertion sheath		Catheter			Echogenic	Packaging
			Length	Ø Ext.	Length	Ø Ext.	Ø Int.		
Frydman Ultrasoft Echo	1324301	7002666	18 cm	2.2 mm	21.5 cm	1.55 mm	0.7 mm	Yes	10/box
Stylet for Frydman Ultrasoft Echo	1320701	7002648	18.8 cm	1.60 mm	N/A	N/A	N/A	N/A	10/box

Class I sterile medical devices. Manufacturer: Laboratoire CCD - CE0459. Carefully read the instructions on the labelling. Use before the expiry date indicated on the wrapping. Do not use if the wrapping or primary packaging is damaged. Frydman Ultrasoft echo exist aslo in 3 pieces «Ultrasoft Frydman Set Echo With Guide. Product information in the next part 3 pieces catheters».



Embryo transfer

Catheter 2 pieces


Ultrasoft Frydman® Set



Product Name	Order Reference	Internal Reference	Insertion sheath		Catheter			Echogenic	Packaging
			Length	Ø Ext.	Length	Ø Ext.	Ø Int.		
Ultrasoft Frydman Set	131220301	7002718	18 cm	2.2 mm	21.5 cm	1.55 mm	0.7 mm	No	10/box

Trial transfer catheters are available separately.

Trial transfer catheter presents similar features to the real transfer catheters, but it's extremity is closed and it's base is green.

Product Name	Order Reference	Internal Reference	Insertion sheath		Catheter			Echogenic	Packaging
			Length	Ø Ext.	Length	Ø Ext.	Ø Int.		
 Ultrasoft Frydman Set Mock	1323701	7002660	18 cm	2.2 mm	21.5 cm	1.55 mm	0.7 mm	No	10/box


Ultrasoft Frydman® Set Echo



Product Name	Order Reference	Internal Reference	Insertion sheath		Catheter			Echogenic	Packaging
			Length	Ø Ext.	Length	Ø Ext.	Ø Int.		
Ultrasoft Frydman Set Echo	1323501	7002658	18 cm	2.2 mm	21.5 cm	1.55 mm	0.7 mm	Yes	10/box

Trial transfer catheters are available separately.

Trial transfer catheter presents similar features to the real transfer catheters, but it's extremity is closed and it's base is green.

Product Name	Order Reference	Internal Reference	Insertion sheath		Catheter			Echogenic	Packaging
			Length	Ø Ext.	Length	Ø Ext.	Ø Int.		
 Ultrasoft Frydman Set Mock Echo	1323801	7002661	18 cm	2.2 mm	21.5 cm	1.55 mm	0.7 mm	Yes	10/box

Class I sterile medical devices. Manufacturer: Laboratoire CCD - CE0459. Carefully read the instructions on the labelling. Use before the expiry date indicated on the wrapping. Do not use if the wrapping or primary packaging is damaged.

 Reference available only for US



Catheter 2 pieces

Pearl Tip Classic and Soft

STERILE R



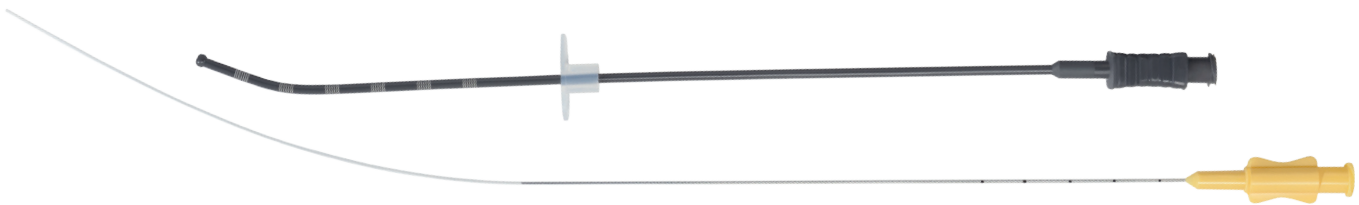
2-piece sets for embryo transfer with pre-curved insertion sheath for simplified use

Composition:

- Flexible, thin catheter, supported on its proximal part.
- Insertion sheath with distal spherical tip, sliding stopper and an arrow indicating the direction of the distal curve of the insertion sheath. The Pearl Tip insertion sheath is atraumatic and facilitates passage through cervixes with difficult access.



Pearl Tip Classic



Pearl Tip Soft



Product Name	Order Reference	Internal Reference	Insertion sheath		Catheter			Echogenic	Packaging
			Length	Ø Ext.	Length	Ø Ext.	Ø Int.		
Pearl tip Classic	1323951	7002663	Curved/ 18.5 cm	2.2 mm	26 cm	1 mm	0.6 mm	No	10/box
Pearl Tip Soft	1323961	7002664	Curved/ 18.5 cm	2.2 mm	26 cm	1 mm	0.6 mm	No	10/box

Class I sterile medical devices. Manufacturer: Laboratoire CCD - CE0459. Carefully read the instructions on the labelling. Use before the expiry date indicated on the wrapping. Do not use if the wrapping or primary packaging is damaged.



Embryo transfer

Catheter 2 pieces

Classic Ultrasoft STERILE R

2-pieces set for embryo transfer

- **Composition:**
 - A transfer catheter in ultrasoft polyurethane on the whole length.
 - FEP (fluoroethylene propylene) insertion sheath for improved sliding.



Product Name	Order Reference	Internal Reference	Insertion sheath		Catheter			Echogenic	Packaging
			Length	Ø Ext.	Length	Ø Ext.	Ø Int.		
Classic Ultrasoft 18 cm	1321301	7002650	13 cm	2.3 mm	23 cm	1,55 mm	0.7 mm	No	10/box
Classic Ultrasoft 23 cm	1324501	7002667	18 cm	2.3 mm	28 cm	1,55 mm	0.7 mm	No	10/box

Trial transfer catheters are available separately.

Trial transfer catheter presents similar features to the real transfer catheters, but it's extremity is closed and it's base is green.



Product Name	Order Reference	Internal Reference	Insertion sheath		Catheter			Echogenic	Packaging
			Length	Ø Ext.	Length	Ø Ext.	Ø Int.		
Classic Ultrasoft Mock 18 cm	1323001	7002654	18 cm	2.3 mm	23 cm	1,5 mm	0.7 mm	No	10/box
Classic Ultrasoft Mock 23 cm	1324601	7002668	23 cm	2.3 mm	28 cm	1,5 mm	0.7 mm	No	10/box

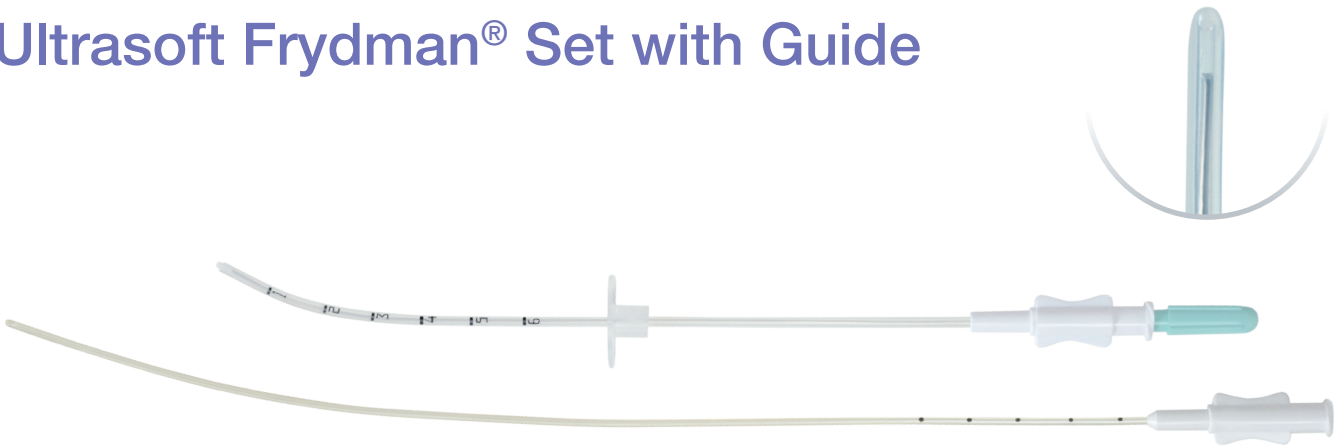
Class I sterile medical devices. Manufacturer: Laboratoire CCD - CE0459. Carefully read the instructions on the labelling. Use before the expiry date indicated on the wrapping. Do not use if the wrapping or primary packaging is damaged.

Reference available only for US



Catheter 3 pieces

Ultrasoft Frydman® Set with Guide



Product Name	Order Reference	Internal Reference	Insertion sheath		Catheter			Echogenic	Packaging
			Length	Ø Ext.	Length	Ø Ext.	Ø Int.		
Ultrasoft Frydman® Set with Guide	131230301	7002719	14,5 cm	2.2 mm	22,5 cm	1.55 mm	0.7 mm	No	10/box

Ultrasoft Frydman® Set Echo with Guide

STERILE R



Echogenic ring at tip



Product Name	Order Reference	Internal Reference	Insertion sheath		Catheter			Echogenic	Packaging
			Length	Ø Ext.	Length	Ø Ext.	Ø Int.		
Ultrasoft Frydman® Set Echo with Guide	1322801	7002652	14,5 cm	2.2 mm	22,5 cm	1.55 mm	0.7 mm	Yes	10/box

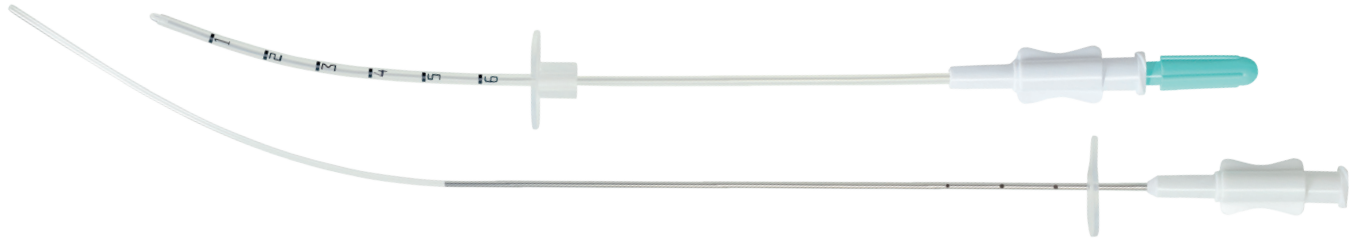
Class I sterile medical devices. Manufacturer: Laboratoire CCD - CE0459. Carefully read the instructions on the labelling. Use before the expiry date indicated on the wrapping. Do not use if the wrapping or primary packaging is damaged.




Embryo transfer

Catheter 3 pieces

Short Frydman Set



Product Name	Order Reference	Internal Reference	Insertion sheath		Catheter			Echogenic	Packaging
			Length	Ø Ext.	Length	Ø Ext.	Ø Int.		
 Short Frydman Set	1307000US	7002733	14.5 cm	2.2 mm	22.5 cm	1.55 mm	0.7 mm	No	10/box

Full Echo[®]

STERILE | R | 

2 PATENTED TECHNOLOGIES

Composition:

- an ultrasoft transfer catheter, echogenic on its whole length. The catheter includes a metal stiffener integrated in its structure to stiffen the proximal segment and improve handling without touching the catheter tip.
- an FEP (fluoroethylene propylene) outer sheath with 6 circular guide-marks, visible irrespective of the direction of the outer sheath when in use,
- a removable malleable stylet to shape the outer sheath prior to its insertion and help clear a difficult cervix more easily.



Product Name	Order Reference	Internal Reference	Insertion sheath		Catheter			Echogenic	Packaging
			Length	Ø Ext.	Length	Ø Ext.	Ø Int.		
Full Echo 23 cm	1326501	7002681	21.5 cm	2.3 mm	29.6 cm	1.5 mm	0.5 mm	Yes	10/box

 Reference available only for US



Embryo transfer

Catheter 3 pieces

2 PATENTED TECHNOLOGIES

Full Echo[®] Pro STERILE R

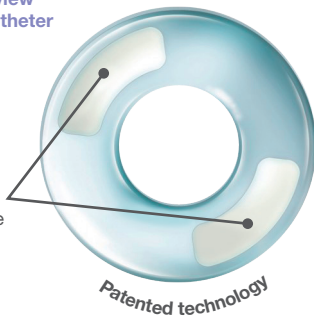
A double technological innovation - total echogenicity and transparency
An echogenic and malleable transfer set for better control of the procedure

▪ Composition and benefits:

- ✓ Catheter echogenic along its entire length for better control.
- ✓ Malleable insertion sheath to facilitate passage through the cervix.
- ✓ The obturating stylet protects the internal lumen of the insertion sheath from mucus contamination during passage into the cervix. This protects the embryo against cervical contaminations and avoids a trial catheterization.

Cross-sectional view of the transfer catheter

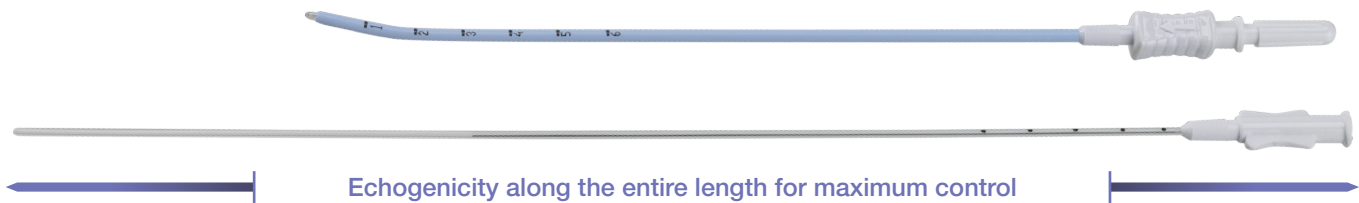
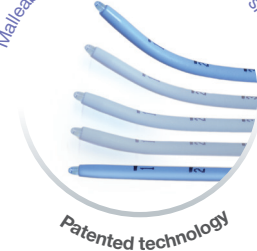
Two echogenic lines included in the transparent wall



Flexible and echogenic catheter



Malleable and pre-formable insertion sheath



Echogenicity along the entire length for maximum control

Product Name	Order Reference	Internal Reference	Insertion sheath		Catheter			Echogenic	Packaging
			Type/Length	Ø Ext.	Length	Ø Ext.	Ø Int.		
Full Echo Pro	1326801	7002683	Malleable / 16 cm	2.7 mm	24 cm	1.55 mm	0.7 mm	Yes	10/box

Class I sterile medical devices. Manufacturer: Laboratoire CCD - CE0459. Carefully read the instructions on the labelling. Use before the expiry date indicated on the wrapping. Do not use if the wrapping or primary packaging is damaged.



Embryo transfer

Catheter 3 pieces

3 PATENTED TECHNOLOGIES

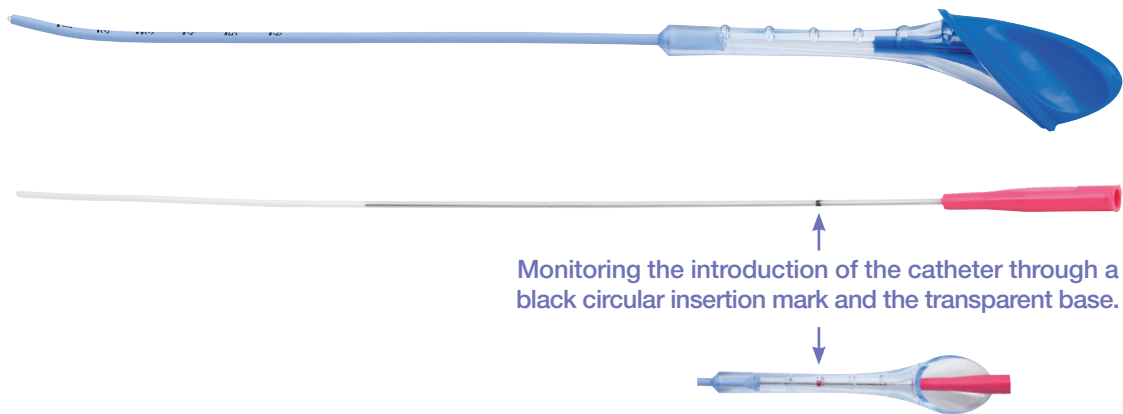
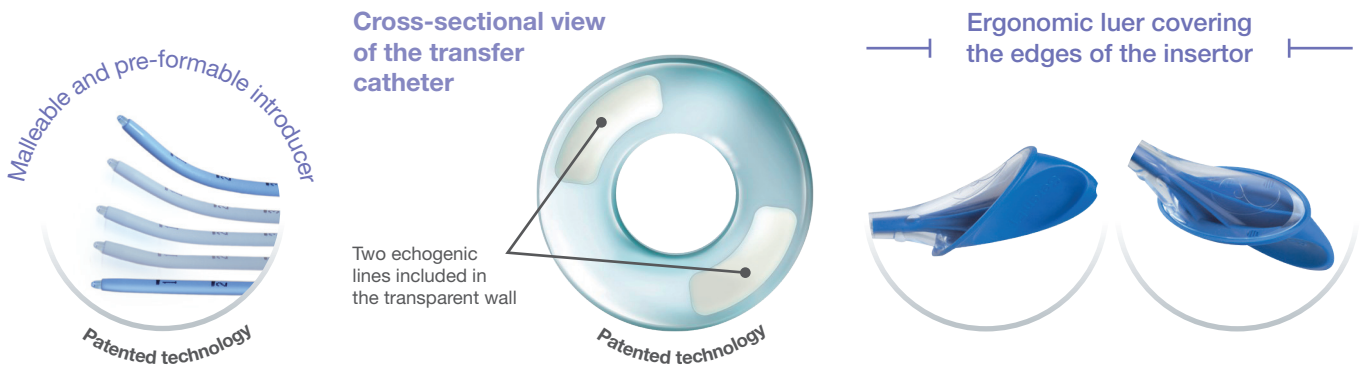
Seren-ET

STERILE R



A 3 in 1, ergonomic and secure catheter for all your transfers

- A flexible echogenic catheter over the entire length (Patented technology) for a controlled and secure introduction. Atraumatic by its rounded end.
- A malleable (Patented technology) and ergonomic insertion tubing thanks to its transparent flared base.
- An obturator protecting against contamination (Patented technology) and atraumatic by its rounded end.



Product Name	Order Reference	Insertion sheath			Obturateur			Catheter			Packaging
		Length*	Ø Ext.	Ø Int.	Length*	Ø Ext.	Ø Int.	Length*	Ø Ext.	Ø Int.	
Seren-ET	7004319	23.5 cm / 15 cm	2.7 mm	1.9 mm	25.5 cm / 20 cm	1.7 mm	-	28.5 cm / 25 cm	1.5 mm	0.5 mm	25/box

* Total length / Useful length

Class I sterile medical devices. Manufacturer: Laboratoire CCD - CE0459. Carefully read the instructions on the labelling. Use before the expiry date indicated on the wrapping. Do not use if the wrapping or primary packaging is damaged.



Catheter 3 pieces

Frydman® Soft with stylet STERILE R

Set with insertion sheath, stylet and flexible catheter

- Flexible catheter, supported at its proximal end to facilitate handling, offered with an insertion sheath equipped with an integrated stylet.
- Introduction sheath to facilitate passage through all cervical profiles.
- Malleable stylet to curve the introduction sheath.



Product Name	Order Reference	Internal Reference	Insertion sheath		Catheter			Echogenic	Packaging
			Length	Ø Ext.	Length	Ø Ext.	Ø Int.		
Frydman Soft with stylet	1307000	7002632	14.5 cm	2.2 mm	22 cm	1.6 mm	1.15 mm	No	10/box

TDT® set STERILE R

Ultra-thin transfer catheter

- **Composition:**
 - Ultra-thin transfer catheter, supported on its proximal end to facilitate handling.
 - Insertion sheath with flexible end and two insertion markers at 5.5 and 6.5 cm.
 - Malleable metal stylet coated with polyethylene to shape the insertion sheath and facilitate passage through the cervix.



Product Name	Order Reference	Internal Reference	Insertion sheath		Catheter			Echogenic	Packaging
			Length	Ø Ext.	Length	Ø Ext.	Ø Int.		
TDT Set	1308000	7002634	18 cm	2.2 mm	22.7 cm	1 mm	0.6 mm	No	10/box
TDT green version*	1308003	7002635	18 cm	2.2 mm	22.7 cm	1 mm	0.6 mm	No	10/box

*TDT green version correspond to the TDT set with a stylet green in all its length.

Class I sterile medical devices. Manufacturer: Laboratoire CCD - CE0459. Carefully read the instructions on the labelling. Use before the expiry date indicated on the wrapping. Do not use if the wrapping or primary packaging is damaged.



Intrauterine insemination catheters

STERILE R



A range of catheters adapted to different needs



Standard version

- ✓ Convenient for most inseminations
- ✓ Two lateral openings on the distal tip
- ✓ 17 cm in length and 4.5 cm flexible tip



Genitor

- ✓ Thin insemination catheter for narrow cervix
- ✓ Small diameter
- ✓ 17 cm in length and 4.5 cm flexible tip



Malleable Memory catheter with shape memory

- ✓ Catheters with shape memory for cervixes with difficult access
- ✓ Adjusts to all cervix profiles
- ✓ 17 cm in length and 4.5 cm flexible tip



Standard version with stylet

- ✓ Convenient for most inseminations
- ✓ Two lateral openings on the distal tip
- ✓ 17 cm in length and 4.5 cm flexible tip
- ✓ Stylet to curve the catheter and facilitate passage through the cervix.



Class I medical devices. Manufacturer: Laboratoire CCD - CE0459. Carefully read the instructions on the labelling. Use before the expiry date indicated on the wrapping. Do not use if the wrapping or primary packaging is damaged.

A range of catheters adapted to different needs



Transport model IUI

- ✓ System for transporting the probe (movement / displacement from one location of the hospital to another)
- ✓ Cap for closing the lateral openings of the distal end
- ✓ Luer-Lock stopper to close the proximal end
- ✓ Protective sheath to keep the probe sterile



Minispace

Intrauterine insemination catheters

Product Name	Order Reference	Internal Reference	Length	Length flexible tip	Int. volume	Ø Int.	Ø Ext.	Packaging
Standard IUI	120400S	7002726	17.5 cm	4.5 cm	0.40 ml	1.65 mm	2.10 mm	25/box
Genitor IUI	120400M	7002725	17.5 cm	4.5 cm	0,10 ml	0.70 mm	1.60 mm	25/box
Malleable memory IUI catheter with shape memory	12040MF	7002728	18 cm	4.5 cm	0.27 ml	1,10 mm	2.10 mm	25/box
Standard IUI catheter with stylet	12040AM	7002727	17.5 cm	4.5 cm	0.40 ml	1.65 mm	2.10 mm	25/box
Transport model IUI	120240301	7002717	17 cm	4.5 cm	0.40 ml	1.70 mm	2.10 mm	25/box
Minispace	1326201	7002678	19.5 cm	4.5 cm	N/A	0.7 mm	1.6 mm	10/box

Class I medical devices except for transport model catheter: Class IIa medical device. Manufacturer: Laboratoire CCD - CE0459. Carefully read the instructions on the labelling. Use before the expiry date indicated on the wrapping. Do not use if the wrapping or primary packaging is damaged.



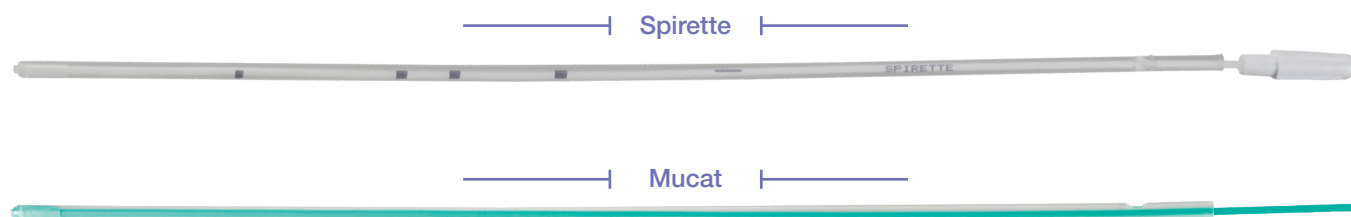
Spirette® and Mucat®

STERILE R



Flexible tip

- Cervical mucus aspiration catheters for Hühner test or cleaning of the cervix before passage of an embryo transfer catheter.
- Aspiration is performed using the integrated plunger and does not require use of a syringe.
- The Spirette catheter has distance markings and a handle to facilitate gripping of the plunger.



Product Name	Order Reference	Internal Reference	Ø Ext.	Ø Int.	Length	Quantity
Spirette	1106000	7002590	3.1 mm	2.6 mm	26.5 cm	25/box
Mucat	110600S	7002721	3.1 mm	2.6 mm	26.5 cm	25/box

OPS® and HOC® vials

STERILE R



Vials for follicular puncture sets

- **Description:**
 - Transparent vials with screw cap for collection and transport of eggs.
 - Compatible with OPS sets.
 - Designed for placement in incubators.
- **Types:**
 - 15 ml OPS vial, Falcon-type with conical bottom.
 - 30 ml HOC vial, flat bottom.



OPS vial
15 ml



HOC vial
30 ml

Product Name	Order Reference	Internal Reference	Volume	Diameter	Length	Packaging
OPS vial	1313000	7002761	15 ml	17 mm	12 cm	100/box
HOC vial	1302001	7002626	30 ml	30 mm	8 cm	10/box

OPS vial: Manufacturer: SARSTEDT In-vitro Product. Flacon HOC, Spirette, Mucat: Class IIa medical devices. Manufacturer: Laboratoire CCD - CE0459. Use before the expiry date indicated on the wrapping. Do not use if the wrapping or primary packaging is damaged.



Functional exploration of the female reproductive system

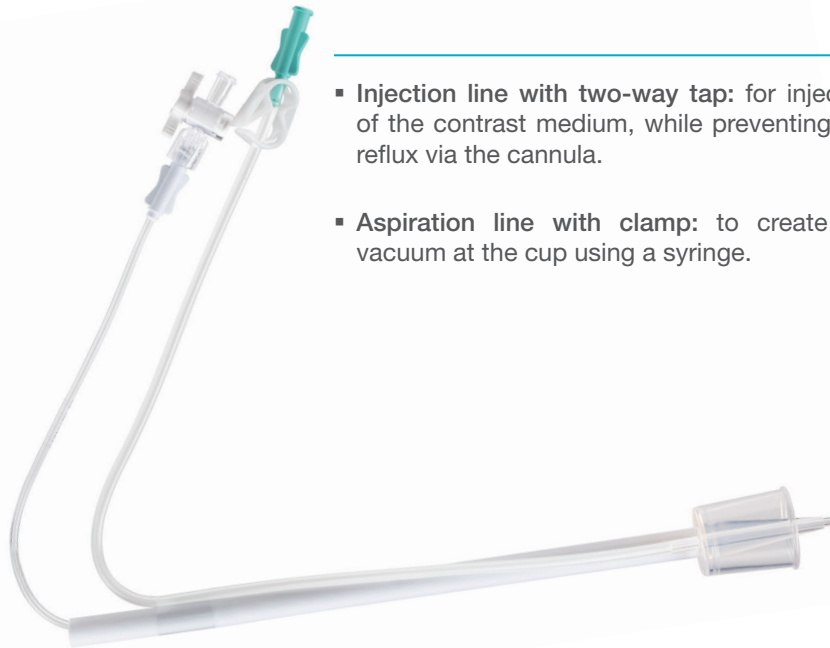
From our Rigiester range for hysterosalpingography, our Pipelle range for endometrial biopsy, to the Siscone range for sonohysterography, Laboratoire CCD has long been regularly developing new devices in collaboration with doctors, to meet their needs and improve the quality of gynaecological exams.

Rigister®

STERILE EO



Device providing optimal opacification of the uterus and fallopian tubes



- **Injection line with two-way tap:** for injection of the contrast medium, while preventing any reflux via the cannula.
- **Aspiration line with clamp:** to create the vacuum at the cup using a syringe.



Cup ensuring seal on the cervix:
 - four different cup sizes to correspond to all cervix shapes; provides sufficient and constant intracavitary pressure to opacity the fallopian tubes

Easy to use

- Aspiration to create the vacuum around the cup using a Luer-Lock syringe. The clamp is used to maintain the vacuum throughout the procedure, to ensure proper gripping of the cervix.
- Injection of contrast medium with a 20 ml Luer-Lock syringe.

Product Name	Order References	Internal References	Ø Cup	Characteristics of the cannula	Packaging
Rigister	1401020	7002686	20 mm	Fixed	10/box
	1401025	7002687	25 mm	Fixed	10/box
	1401030	7002688	30 mm	Fixed	10/box
	1401035	7002689	35 mm	Fixed	10/box

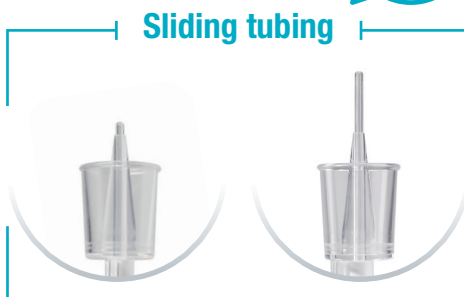
Class I sterile medical devices. Manufacturer: Laboratoire CCD - CE0459. Carefully read the instructions on the labelling. Use before the expiry date indicated on the wrapping. Do not use if the wrapping or primary packaging is damaged.

Sliding Rigister®

STERILE EO 

Device providing optimal opacification of the uterus and fallopian tubes with a sliding tube to facilitate its insertion into the cervix

- Aspiration line with clamp.
- Injection line with two-way tap.
- Cup providing seal at cervix: four different cup sizes.
- Sliding tubing for improved access and easier passage into the cervix.



Product Name	Order References	Internal References	Ø Cup	Characteristics of the tubing	Packaging
Sliding Rigister	1404020	7002694	20 mm	Mobile	10/box
	1404025	7002695	25 mm	Mobile	10/box
	1404030	7002696	30 mm	Mobile	10/box
	1404035	7002697	35 mm	Mobile	10/box

Bloc Connector

STERILE EO 

Accessories for hysterosalpingography

The Bloc Connector is a male Luer-Lock/taper adapter to connect Rigister and Sliding Rigister devices to a vacuum source.



Product Name	Order Reference	Internal Reference	Packaging
Bloc Connector	1507000	7002704	25/box

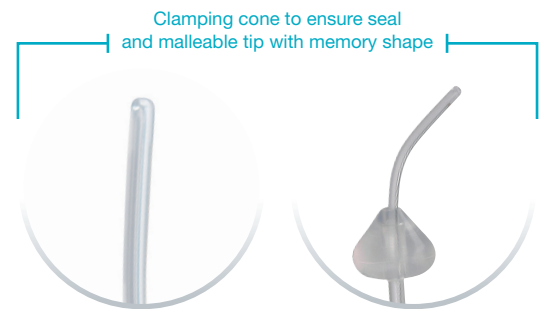
Class I sterile medical devices. Manufacturer: Laboratoire CCD - CE0459. Carefully read the instructions on the labelling. Use before the expiry date indicated on the wrapping. Do not use if the wrapping or primary packaging is damaged.

Siscone® STERILE R 

Injection of saline solution with anti-leak system for sonohysterography and contrast sonohysterography

Composition:

- Translucent silicone mobile taper providing seal on cervix (reduces risk of leak without affecting visibility).
- Malleable tip with memory shape to facilitate passage through the cervix.



Malleable tip

- + facilitated passage through the cervix, even in difficult cases



Silicone cone

- + to seal the cervix
 - better distension of the uterus and better vision of anatomical structures
- + painless for the patient

Cone stop system

- + optimal positioning of the cone against the cervix
 - better seal

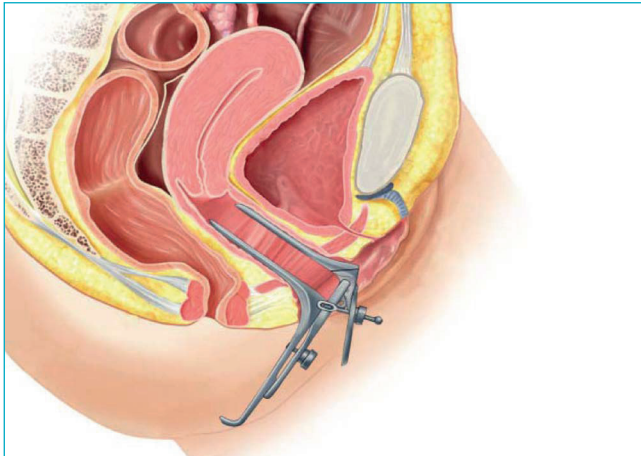
Product Name	Order References	Internal References	Ø Ext.	Ø Int.	Length	Working Length	Opening	Position of insertion markings	Packaging
Siscone	1222001	7002620	2.1 mm	1.1 mm	20.5 cm	18 cm	Distal	5 and 6 cm	10/box

For quality sonohysterography

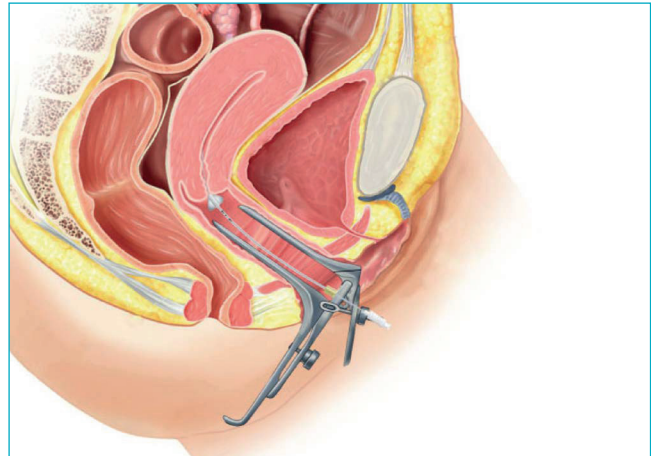
- The cone ensures the seal on the cervix → to highlight anatomical structures.
- The cone remains outside of the uterus → to prevent interference with the ultrasound signal.
- Possibility of performing HyCoSy → H yCoSy (Hysterosalpingo Contrast Sonography) to check the permeability of the fallopian tubes.

Class I sterile medical devices. Manufacturer: Laboratoire CCD - CE0459. Carefully read the instructions on the labelling. Use before the expiry date indicated on the wrapping. Do not use if the wrapping or primary packaging is damaged.

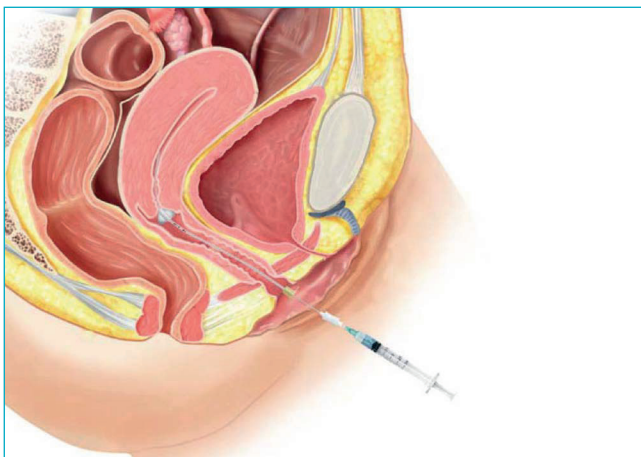
Easy to use



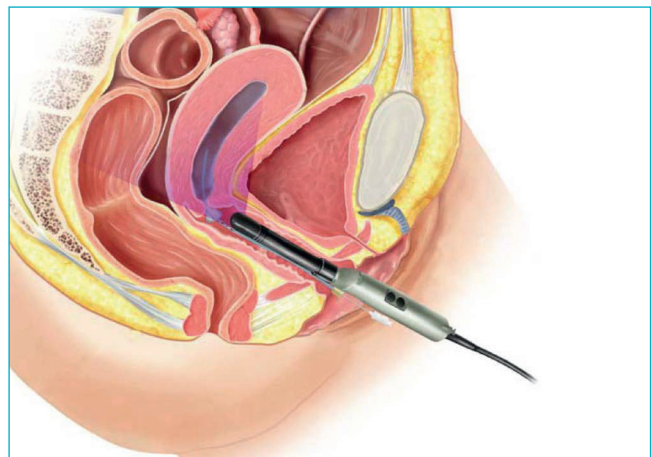
1- After disinfection of the cervix, insert the speculum



2- Insert the Sisoncine, making sure that the cone is up against the cervix



3- Remove the speculum and connect a syringe of saline solution



4- Insert the ultrasound probe and perform the ultrasound while injecting the liquid

Rudigoz catheter

STERILE EO

Injection of saline solution for sonohysterography and contrast sonohysterography

- Catheter for sonohysterography with tapered flexible distal tip along 2 cm to prevent any harm to the mucous membranes of the endometrium.

Flexible tapered tip



Product Name	Order References	Internal References	Ø Ext.	Ø Int.	Length	Opening	Position of insertion markings	Packaging
Rudigoz catheter	1402000	7002690	2.1 mm	1.7 mm	19 cm	Distal	3 and 4 cm	25/box

Class I sterile medical devices. Manufacturer: Laboratoire CCD - CE0459. Carefully read the instructions on the labelling. Use before the expiry date indicated on the wrapping. Do not use if the wrapping or primary packaging is damaged.

Pipelle® STERILE EO

Endometrial biopsy by aspiration,
for effective endometrial cancer screening

- The Pipelle is the gold standard for the screening of endometrial cancers, with more than two hundred publications attesting to its effectiveness, reliability and safety.
- Its aspirating force provides high-quality sampling.



Product Name	Order References	Internal References	∅ Ext.	∅ Int.	Length	∅ Lateral opening	Sampling type	Packaging
Pipelle	1103000	7002588	3.1 mm	2.6 mm	23.5 cm	2.1 mm	Histology	25/box

Pipelle® Mark II STERILE EO

 The improved version

Histological and cytological sampling in one procedure

- The Pipelle Mark II, an improved version of the Pipelle, has a rough distal tip providing for the sampling of endometrial surface cells.
- For an even more thorough sample collection, allowing for histology and cytology in just one procedure.

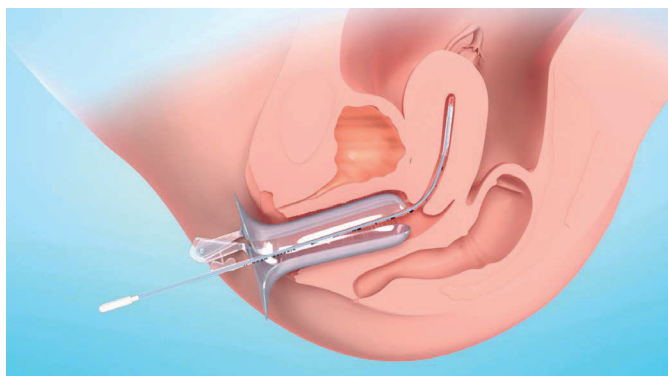


 Rough tip for cytology

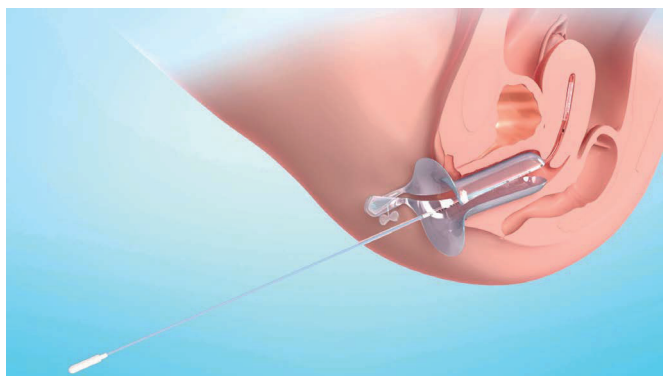
Product Name	Order References	Internal References	∅ Ext.	∅ Int.	Length	∅ Lateral opening	Sampling type	Packaging
Pipelle Mark II	111020100	7002716	3.1 mm	2.6 mm	23.5 cm	2.1 mm	Histology + cytology	25/box

Class I sterile medical devices. Manufacturer: Laboratoire CCD - CE0459. Carefully read the instructions on the labelling. Use before the expiry date indicated on the wrapping. Do not use if the wrapping or primary packaging is damaged.

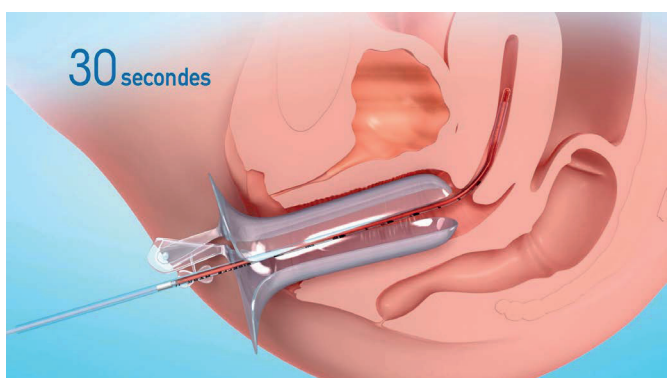
Easy to use



1- Insert the Pipelle® until reaching the uterine fundus



2- In one movement, pull on the plunger to bring it as far as it will go



3- Sweep the uterus for 30 seconds, in back-and-forth movements and rotations



4- Cut the tip of the Pipelle®



5- Push the plunger back in again to empty the content

Pipelle® H STERILE EO

Based on Pipelle, Pipelle H is lengthened to allow being passed through the diagnostic sheath of a hysteroscope, once the optic has been removed

- Owing to its length (50 cm), the Pipelle H produces enough suction to collect a large volume of endometrial tissue, despite the presence of the distension medium, and without having to repeat the procedure several times.
- As the Pipelle H is much longer than the hysteroscope, it is always possible to perform a biopsy, even if the uterine cavity is large.
- Numbered guide-marks to gauge the insertion length.



Product Name	Order References	Internal References	∅ Ext.	∅ Int.	Useful length	∅ Lateral opening	Sampling type	Packaging
Pipelle H	1112301	7002606	3.1 mm	2.6 mm	50 cm	2.1 mm	Histology	10/box

Class II medical device according the US FDA regulation. Manufacturer: Laboratoire CCD - CE0459. Carefully read the instructions on the labelling. Use before the expiry date indicated on the wrapping. Do not use if the wrapping or primary packaging is damaged.

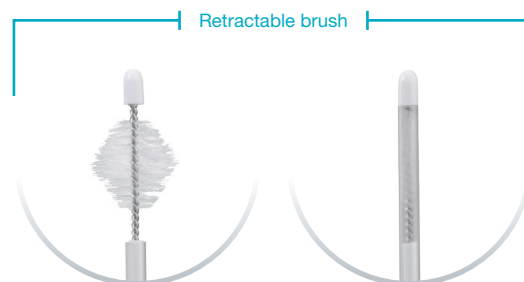
Endometrial smear

Endobrush[®] STERILE EO

Cytology and endometrial sampling

Diamond-shaped brush for sampling of endometrial surface cells. The brush retracts fully in the sheath and is covered by a rounded end cap.

- Atraumatic during passage into the cervix.
- Protection of the brush and sample against contamination.



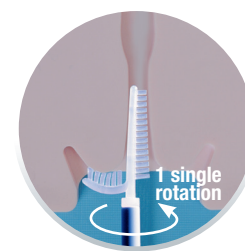
Product Name	Order References	Internal References	Diameter	Length	Packaging
Endobrush	1113000	7002608	Diamond-shaped brush Length: 2 cm - Max. diameter: 15 mm	23.5 cm	25/box

Cervical smear

Duo-Brush[®] NON STERILE

Sampling of endocervical and exocervical cells in one procedure

- Ergonomic brush with two polyethylene axes.
- Atraumatic access of the cervix with the central brush and sweeping of the exocervical surface with the lateral brush.
- Ideal for classic smear on slide or in a liquid medium.



6 cm bisected end for cytology in liquid medium

Product Name	Order References	Internal References	Central branch length	Lateral branch length	Total length	Packaging
Duo-Brush	1112201	7002605	2.5 cm	1 cm	23.2 cm	250/box

Endobrush: Class I sterile medical devices. Duo-Brush: Class I non-sterile medical device. Manufacturer: Laboratoire CCD - CE0459. Use before the expiry date indicated on the wrapping. Do not use if the wrapping or primary packaging is damaged.

Cervical smear

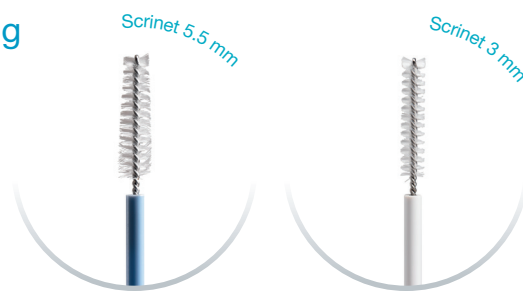
Scrinet®

STERILE EO



Cytology of the endocervix or bacteriological sampling

- Cylindrical polyamide swab brush, mounted on a polypropylene handle.
- Swabbing of the endocervix to sample cells for smear for cervical cancer screening or testing for bacterial infections.



Product Name	Order References	Internal References	Diameter	Packaging
Scrinet 3 mm	1107030	7002591	3 mm	50/box
Scrinet 5.5 mm	1107055	7002592	5.5 mm	50/box

Available in non-sterile version (packaging: 250/box and case of 10 units):

- Scrinet 3 mm: 1107530
- Scrinet 5.5 mm: 1107555

Functional exploration

Cusco speculum

STERILE EO



Viewing of the cervix and vagina

- Transparent plastic speculums providing good visibility to the practitioner and greater comfort to the patient than metal speculums, and preventing thermal shocks.
- Available in three sizes, to correspond to all patient body shapes.
- Safety screw for rapid locking of the device.



Product Name	Order References	Internal References	Diameter	Length	Couleur de la vis	Packaging
Cusco speculum	7004684	7004684	16 mm	10 cm	green	100/box
	7004685	7004685	24 mm	10 cm	blue	100/box
	7004686	7004686	30 mm	10 cm	white	100/box

Class I sterile medical devices. Scrinet: Manufacturer: Laboratoire CCD - CE0459. Spéculum: Manufacturer: Oiarso Medical - CE 0123. Use before the expiry date indicated on the wrapping. Do not use if the wrapping or primary packaging is damaged.

Flexible hysteroscope

STERILE EO



Measurement of uterine depth

- Flexible hysteroscopes with distance markings from the distal tip along 15 cm.
- Made of polyethylene, they can bend and are equipped with shape memory to facilitate passage into the cervix.



Product Name	Order References	Internal References	Size	Total length	Usable length	Packaging
Flexible hysteroscope	1502S10	7002736	CH 10	29.6 cm	15 cm	25/box
	1502S12	7002737	CH 12	29.6 cm	15 cm	25/box
	1502S14	7002738	CH 14	29.6 cm	15 cm	25/box

Progressive dilator

STERILE EO



Progressive cervical dilation for endo-uterine exams

- The distal part has four or five segments (depending on the model) measuring 1.5 cm each, with increasing diameters from the distal tip.
- Progressive dilation with hysteroscopy, curettage, endouterine aspiration, etc.



Product Name	Order References	Internal References	Segment diameter	Length of the intracervical part	Packaging
Dilator - Small model	1605000	7002710	5 - 6 - 7 - 8 mm	6.5 cm	10/box
Dilator - Large model	1605001	7002711	8 - 9 - 10 - 11 - 12 mm	8.5 cm	10/box

Class I sterile medical devices. Manufacturer: Laboratoire CCD - CE0459. Carefully read the instructions on the labelling. Use before the expiry date indicated on the wrapping. Do not use if the wrapping or primary packaging is damaged.

Retrievette STERILE EO

Removal of IUDs

The Retrievette is designed to grasp the strings or body of an intrauterine device (IUD) for its removal.

▪ **Composition:**

- Concave part with three notches and a rounded tip.
- Handle for good grip.

Using a rotating movement in the uterus, gently pressing against the uterine wall, the Retrievette notches grasp the IUD string to pull it towards the external opening of the cervix.



Product Name	Order Reference	Internal Reference	Length	Packaging
Retrievette	1504000	7002701	23.5 cm	10/box

Endovaginal probe covers NON STERILE

Protection against viral and bacterial contamination

Latex catheter cover without powder or lubricant, for use with all endovaginal probe models.



Product Name	Order References	Internal References	Length	Diameter	Thickness	Packaging
Endovaginal probe covers	7004820	7004820	180 - 190 mm	52 mm	0.065 mm	72/box

Retrievette: Class I sterile medical device. Manufacturer: Laboratoire CCD - CE0459. Carefully read the instructions on the labelling. Endovaginal probe covers: Class IIa non-sterile medical device. Manufacturer: Bexen Medical - CE 0120. Carefully read the instructions on the labelling. Use before the expiry date indicated on the wrapping. Do not use if the wrapping or primary packaging is damaged.





Obstetrics

Because antenatal screening is already a difficult moment for a patient, Laboratoire CCD offers high quality devices to the gynaecologists to help them realise quality sampling and facilitate the procedure.

Needles for amniocentesis and cordocentesis

STERILE R



Enhanced echogenicity for better control of the procedure

- **Needle with sandblasted** distal tip for enhanced echogenicity.
- **Triple-bevel tip (60°)** for easier insertion through tissue.
- **Stylet used** to increase the rigidity of the needle and prevent coring.

- **Two indications:**
 - Transabdominal sampling of amniotic fluid.
 - Transabdominal puncture of foetal blood in the umbilical cord.



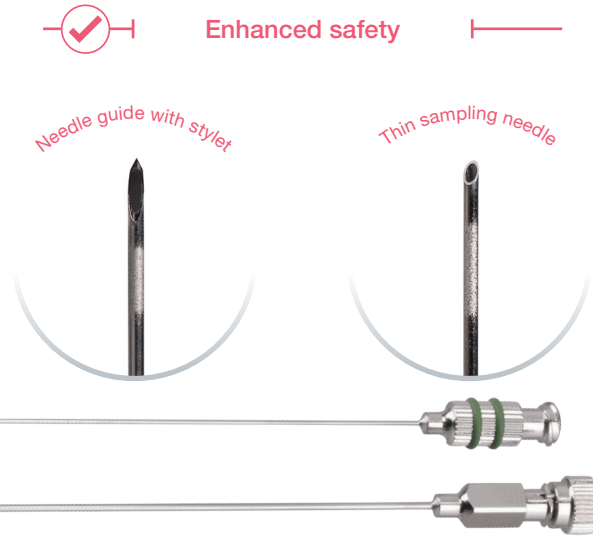
Product Name	Order References	Internal References	Length	Diameter	Colour of stylet base	Packaging
Needles for amnio/cordocentesis	1140701	7002610	10 cm	0.9 mm 20 G	● yellow	25/box
	1110600	7002599	12 cm		● blue	
	1119615	7002609	15 cm		● yellow	
	7004836	7004836	18 cm		● blue	

Class IIa medical devices. Manufacturer: Laboratoire CCD - CE0459. Carefully read the instructions on the labelling. Use before the expiry date indicated on the wrapping. Do not use if the wrapping or primary packaging is damaged.

CVS set STERILE R

Safe sampling and procedure for chorionic villus sampling

- **Composition:**
 - Two echogenic coaxial needles to ensure optimal transabdominal chorionic villus sampling under ultrasound monitoring.
 - Guide needle equipped with a removable stylet to penetrate the abdomen without risk of coring tissue.
 - Thin sampling needle inserting in the guide needle in the place of the stylet to perform the biopsy.
- The guide needle and sampling needle have echogenic marking by sandblasting at 5 mm from the tip to ensure optimal visibility of needles during ultrasound monitoring.
- The guide needle allows for resampling in situ without having to insert another needle into the patient.



Sampling needle

Needle guide and stylet

Product Name	Order Reference	Internal Reference	Needle guide			Sampling needle			Packaging
			Length	Ø Int.	Ø Ext.	Length	Ø Int.	Ø Ext.	
CVS set	1141201	7002611	15 cm	1 mm	1.25 mm 18 G	18.5 cm	0.6 mm	0.8 mm 21 G	10/box

Blache needle STERILE R

Single needle with trocar

- Blache needle for ultrasound-guided transabdominal sampling with a short bevel and a lateral window near its tip.
- **Triangular-tip trocar** for tissue perforation.



Product Name	Order References	Internal References	Length totale	Ø Int.	Ø Ext.	Packaging
Blache needle	1110800	7002601	11 cm	1.05 mm	1.3 mm 18 G	10/box

Class IIa medical devices. Manufacturer: Laboratoire CCD - CE0459. Carefully read the instructions on the labelling. Use before the expiry date indicated on the wrapping. Do not use if the wrapping or primary packaging is damaged.



Chorionic villus sampling

ABC system STERILE EO

Continuous aspiration set

- Aspiration system with continuous suction, comprising a syringe with stop at 20 ml and an extension equipped with a clamp.
- In combination with amniocentesis and cordocentesis needles or chorionic villus sampling sets.
- Tube with clamp for disconnection of the syringe without disturbing the position of the sampling needle.



Product Name	Order Reference	Internal Reference	Tube		Syringe		Packaging
			Length	Connections	Volume	Connection	
ABC system	1604000	7002709	10 cm	Female Luer Lock + rotating male Luer Lock	20 ml	Male Luer Lock	10/box

Amniopic® STERILE EO

Ergonomic and safe amniotic membrane perforator

- Slightly curved amniotic membrane perforator.
- Rounded exterior and profiled hook to prevent lesion of surrounding tissues during insertion.



Product Name	Order Reference	Internal Reference	Length	Packaging
Amniopic	16004PO	7002742	25 cm	25/box

Class I sterile medical devices. Manufacturer: Laboratoire CCD - CE0459. Carefully read the instructions on the labelling. Use before the expiry date indicated on the wrapping. Do not use if the wrapping or primary packaging is damaged.

Alphabetical Index

Product Name	Order References	Internal References	Page
ASSISTED REPRODUCTIVE TECHNOLOGY			
OPS ART of CCD without tap 30 cm	1313101	7002639	10
OPS ART of CCD with tap 30 cm	1313201	7002640	10
HOC ART of CCD without tap 30 cm	1313301	7002641	10
HOC ART of CCD with tap 30 cm	1313401	7002642	10
HOC2 ART of CCD without tap 30 cm	1313501	7002643	10
OPS Classic with tap 30 cm	7005722	7005722	11
OPS Classic without tap 30 cm	7005723	7005723	11
OPS Classic with tap 35 cm	7005413	7005413	11
OPS Classic without tap 35 cm	7005414	7005414	11
HOC Classic with tap 30 cm	7005716	7005716	11
HOC Classic without tap 30 cm	7005720	7005720	11
HOC2 Classic without tap 30 cm	7005721	7005721	11
Ovo needle ART of CCD 30 cm	1313701	7002645	12
Ovo Classic needle 25 cm	1403002	7002692	12
Ovo Classic needle 30 cm	1403001	7002691	12
Inventcath Eco	1320121	7002647	13
Frydman Classic 4.5	1306045	7002630	13
Frydman Classic 5.5	1306055	7002631	13
Frydman Memory	130MF45	7002735	13
Mock catheter	1322901	7002653	14
Echogyn Embryoview M 18 cm	1325901	7002675	14
Echogyn Embryoview M 23 cm	1325701	7002673	14
Echogyn Embryoview M Mock 18 cm	1326001	7002676	14
Echogyn Embryoview M Mock 23 cm	1325801	7002674	14
Frydman Ultrasoft	1324201	7002665	15
Stylet for Frydman Soft Ultrasoft	1320701	7002648	15
Frydman Ultrasoft Echo	1324301	7002666	15
Stylet for Frydman Soft Ultrasoft	1320701	7002648	15
Ultrasoft Frydman Set	131220301	7002718	16
Ultrasoft Frydman Set Mock	1323701	7002660	16
Ultrasoft Frydman Set Echo	1323501	7002658	16
Ultrasoft Frydman Set Mock Echo	1323801	7002661	16
Pearl tip Classic	1323951	7002663	17
Pearl Tip Soft	1323961	7002664	17
Classic Ultrasoft 18 cm	1321301	7002650	18
Classic Ultrasoft 23 cm	1324501	7002667	18
Classic Ultrasoft Mock 18 cm	1323001	7002654	18
Classic Ultrasoft Mock 23 cm	1324601	7002668	18
Ultrasoft Frydman® Set with Guide	131230301	7002719	19
Ultrasoft Frydman® Set Echo with Guide	1322801	7002652	19
Short Frydman Set	1307000US	7002733	20
Full Echo 23 cm	1326501	7002681	20
Full Echo Pro	1326801	7002683	21
Seren-ET	7004319	7004319	22
Frydman Soft with stylet	1307000	7002632	23
TDT set	1308000	7002634	23
TDT set green version	1308003	7002635	23
Standard IUI	120400S	7002726	25
Genitor IUI	120400M	7002725	25
Malleable memory IUI catheter with shape memory	12040MF	7002728	25
Standard IUI catheter with stylet	12040AM	7002727	25
Transport model IUI	120240301	7002717	25
Minispace	1326201	7002678	25
Spirette	1106000	7002590	26
Mucat	110600S	7002721	26
OPS vial	1313000	7002761	26
HOC vial	1302001	7002626	26

Product Name	Order References	Internal References	Page
FUNCTIONAL EXPLORATION OF THE FEMALE REPRODUCTIVE SYSTEM			
Rigister 20 mm	1401020	7002686	30
Rigister 25 mm	1401025	7002687	30
Rigister 30 mm	1401030	7002688	30
Rigister 35 mm	1401035	7002689	30
Sliding Rigister 20 mm	1404020	7002694	31
Sliding Rigister 25 mm	1404025	7002695	31
Sliding Rigister 30 mm	1404030	7002696	31
Sliding Rigister 35 mm	1404035	7002697	31
Bloc Connector	1507000	7002704	31
Siscone	1222001	7002620	32
Rudigoz catheter	1402000	7002690	33
Pipelle	1103000	7002588	34
Pipelle Mark II	111020100	7002716	34
Pipelle H	1112301	7002606	34
Endobrush	1113000	1113000	36
Duo-Brush	1112201	7002605	36
Scrinet 3 mm	1107030	7002591	37
Scrinet 5.5 mm	1107055	7002592	37
Scrinet 3 mm (non-sterile version)	1107530	NA	37
Scrinet 5.5 mm (non-sterile version)	1107555	NA	37
Cusco speculum 16 mm	7004684	7004684	37
Cusco speculum 24 mm	7004685	7004685	37
Cusco speculum 30 mm	7004686	7004686	37
Flexible hysteroscope CH10	1502S10	7002736	38
Flexible hysteroscope CH12	1502S12	7002737	38
Flexible hysteroscope CH14	1502S14	7002738	38
Dilator - Small model	1605000	7002710	38
Dilator - Large model	1605001	7002711	38
Retrievette	1504000	7002701	39
Endovaginal probe covers	7004820	7004820	39

OBSTETRICS			
Needles for amnio/cordocentesis 10 cm	1140701	7002610	42
Needles for amnio/cordocentesis 12 cm	1110600	7002599	42
Needles for amnio/cordocentesis 15 cm	1119615	7002609	42
Needles for amnio/cordocentesis 18 cm	7004836	7004836	42
CVS set	1141201	7002611	43
Blache needle	1110800	7002601	43
ABC system	1604000	7002709	44
Amniopic	16004PO	7002742	44

50

For 50 years, Laboratoire CCD has listened to women. CCD has a central position in the fields of Assisted Reproductive Technology, Gynecology and Obstetrics, and developing a wide range of french-made medical devices, pharmaceuticals dietary supplements for the health of each and every woman. Our daily mission, to provide care to women and accompany them through each phase of their lives.



40 Rue des Petites Écuries
75010 Paris
www.laboratoire-ccd.com

International customer service

Tel: +33 (0)1 44 95 17 00 - Fax : +33 (0)1 44 95 14 90
Email: customer-service@ccdlab.com

All rights reserved to Laboratoire CCD

VR6359 - 3000385 -12/2020

This document is intended solely for the use of healthcare professionals.