

NEOVEIL™



REINFORCEMENT PGA FELT

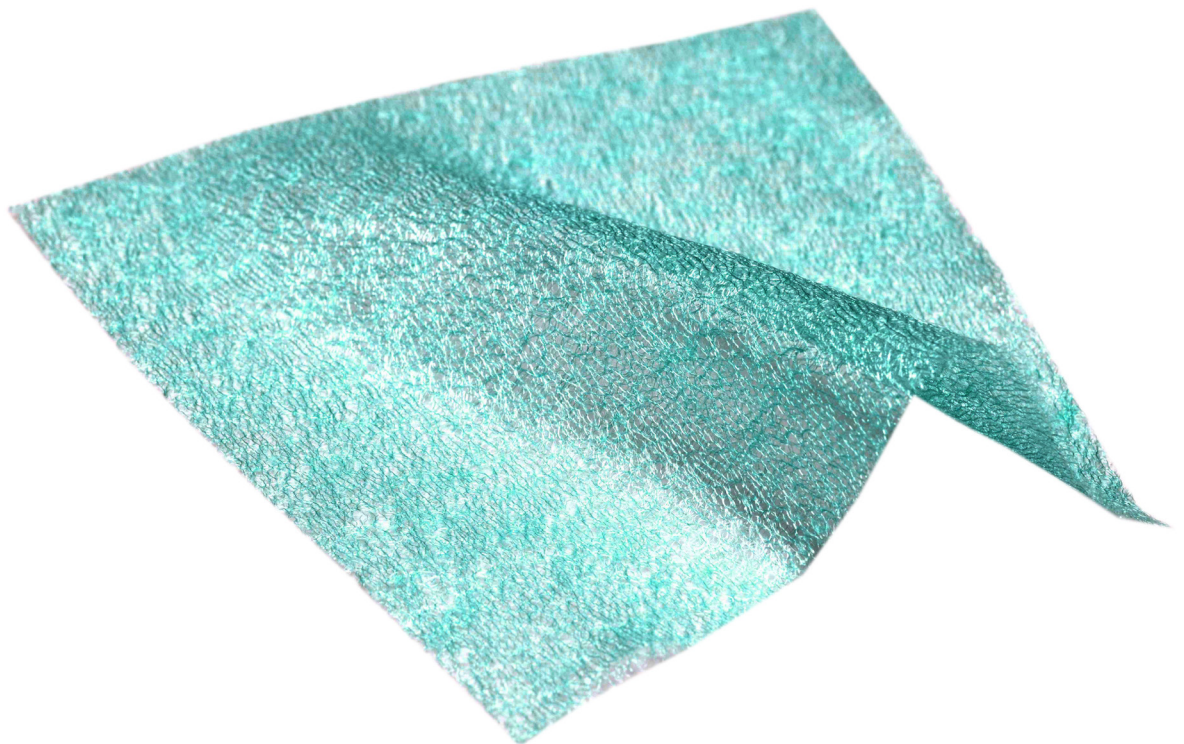
GUNZE



NEOVEIL™ Tube type

FOR OPEN & THORACOSCOPIC SURGERY

NEOVEIL™ Sheet type



NEOVEIL™

What is NEOVEIL?



**100%
PGA**

**BIO-
ABSORBABLE**

**SOFT
TISSUE
REINFORCEMENT
MATERIAL**

The intended use of **NEOVEIL™** is to

REINFORCE SUTURED AREAS

ADVANTAGES



**PREVENTING
AIR LEAKAGE**



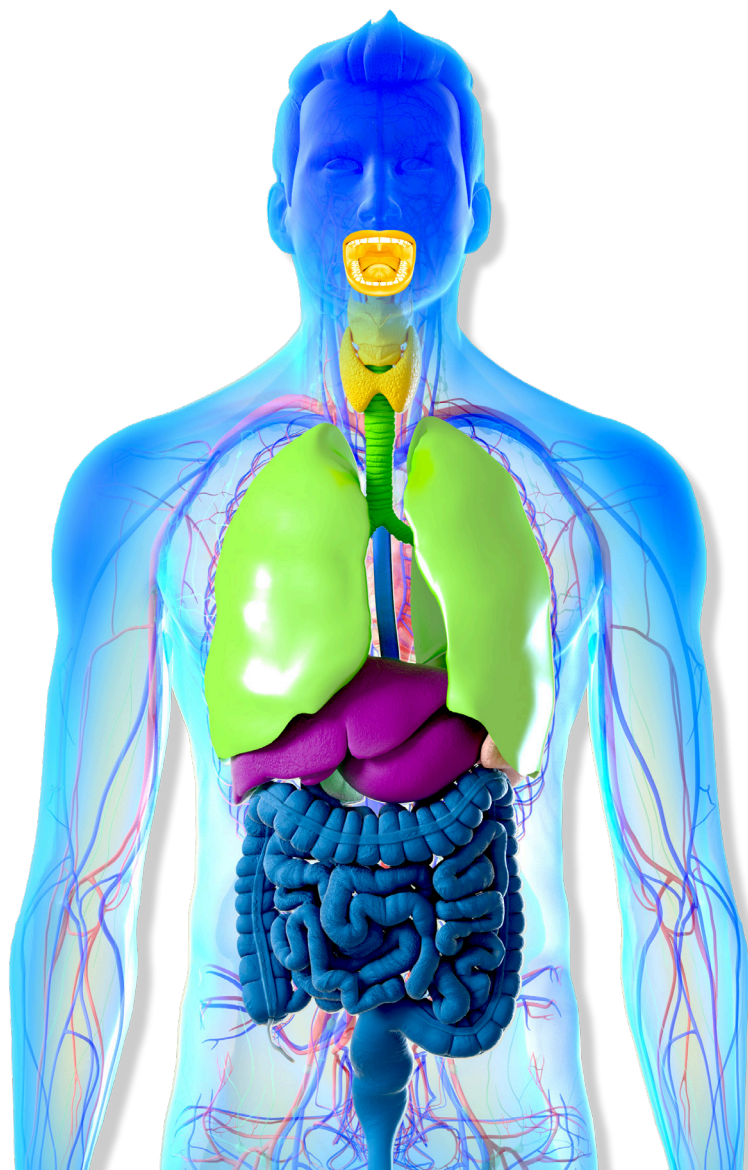
**PREVENTING
FLUID LEAKAGE**



**PREVENTING
FISTULA**

NEOVEIL™ has been used successfully in various areas of the body.
Ask the GUNZE Team for case reports to get more information.
Make sure to consult the IFU before application.

Usable all over the human body



ENT, Oral & Maxillofacial surgery

Thoracic surgery

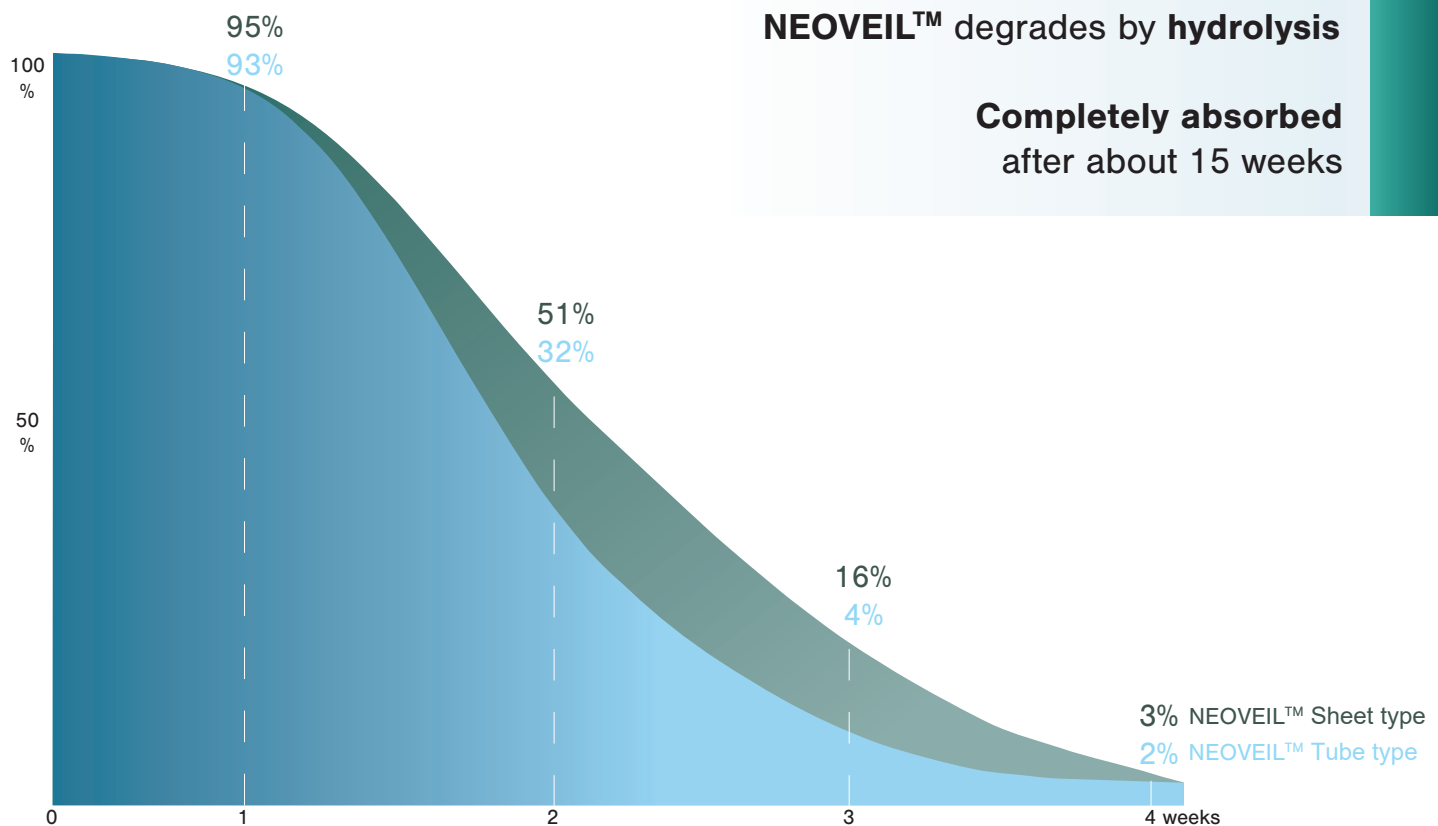
Hepatobiliary & Pancreatic surgery

ESD (Endoscopic submucosal dissection)

Indications:

- | | |
|------------|--|
| Sheet type | <ol style="list-style-type: none">1. Reinforcement for regions of soft tissues /organs in thoracic, abdominal and oral surgery.2. Prevention of air leakage from the lung, bronchi and diaphragm, where such prevention is difficult to perform by only using sutures or surgical staplers. |
| Tube type | <ol style="list-style-type: none">1. Reinforcement for regions of soft tissues /organs in thoracic and abdominal surgery.2. Prevention of air leakage from the lung, bronchi and diaphragm, where such prevention is difficult to perform by only using surgical staplers. |

Retention of strength



Did you know...

JAPAN

...that NEOVEIL™ is a Ubi ZWifYX %\$\$i in >UdUb?

1.95
MILLION

Total sales from 1992 to Sep. 2019

= **1,947,000 pieces**

0.0003%

Rate of complaints reported to the authorities was **0.000308%**

= **6 cases from 1992**

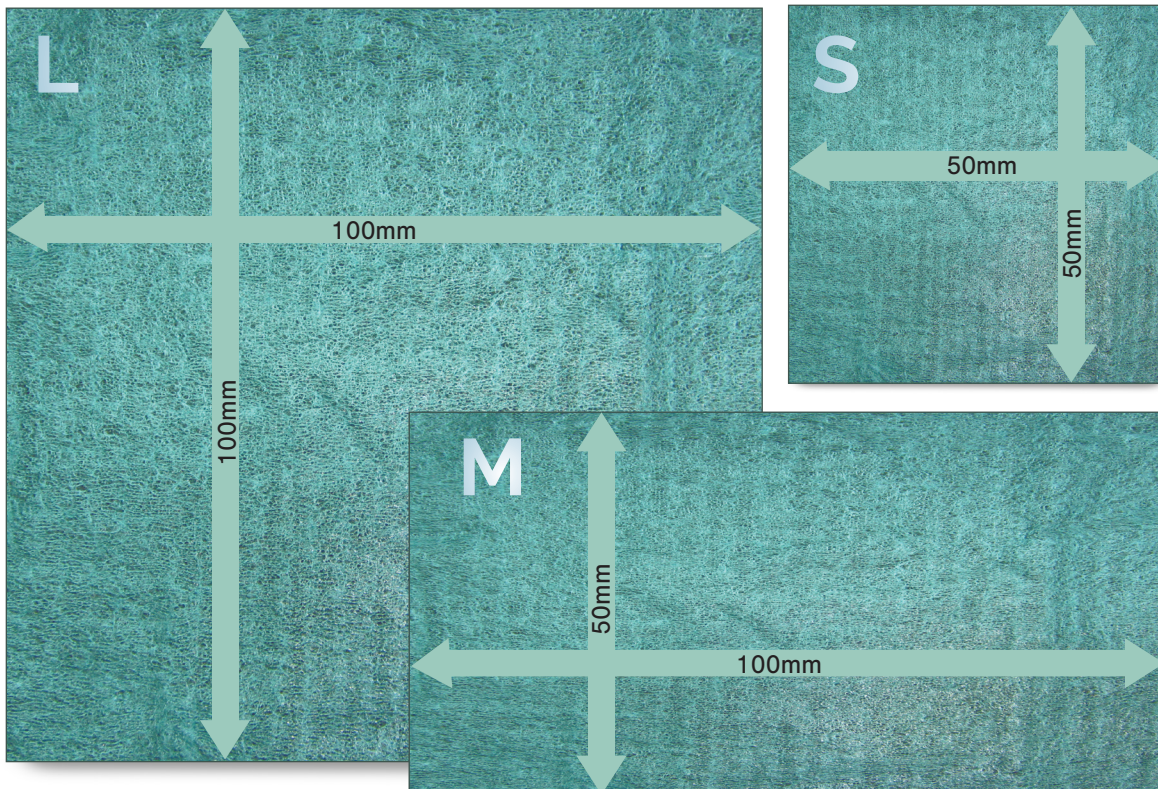
Product Variation **NEOVEIL™** Sheet type

NEOVEIL™ is green, which makes it easy to distinguish from clinical tissues.

Code	Size
NV-L-04G	100 x 100 x 0.4 mm
NV-L-03G	100 x 100 x 0.3 mm
NV-L-015G	100 x 100 x 0.15 mm
NV-M-04G	100 x 50 x 0.4 mm
NV-M-03G	100 x 50 x 0.3 mm
NV-M-015G	100 x 50 x 0.15 mm
NV-S-04G	50 x 50 x 0.4 mm
NV-S-03G	50 x 50 x 0.3 mm



1 sheet / box



1:1 scale

Product Variation NEOVEIL™ Tube type

(1) For Open Surgery

Code	Supported stapler models
NV-T-M60-R	[Johnson & Johnson] PROXIMATE 55mm Linear Cutter
	[Medtronic] MULTIFIRE GIA 60 Cartridge
	[Medtronic] GIA 60 Cartridge
NV-T-M80-R	[Johnson & Johnson] PROXIMATE 75mm Linear Cutter
	[Medtronic] MULTIFIRE GIA 80 Cartridge
	[Medtronic] GIA 80 Cartridge
NV-T-M90-R	[Medtronic] GIA 90P Cartridge



1 set / box

(2) For Thoracoscopic Surgery

Code	Supported stapler models
NV-ET-M45E-2	[Johnson & Johnson] ECHELON ENDOPATH 45mm Stapler
	[Johnson & Johnson] ECHELON FLEX ENDOPATH 45mm Stapler
	[Johnson & Johnson] ECHELON FLEX Powered ENDOPATH 45mm Stapler
	[Medtronic] ENDO GIA II 45 Cartridge (Green)
	[Medtronic] ENDO GIA Reticulator 45 Cartridge (Green)
NV-ET-M60E-2	[Medtronic] ENDO GIA 45mm Articulating Extra-Thick Reload with Tri-Staple Technology (Black)
	[Johnson & Johnson] ECHELON ENDOPATH 60mm Stapler
	[Johnson & Johnson] ECHELON FLEX ENDOPATH 60mm Stapler
	[Johnson & Johnson] ECHELON FLEX Powered ENDOPATH 60mm Stapler
	[Medtronic] ENDO GIA II 60 Cartridge (Green)
NV-ET-M45A-2	[Medtronic] ENDO GIA Reticulator 60 Cartridge (Green)
	[Medtronic] ENDO GIA 60mm Articulating Extra-Thick Reload with Tri-Staple Technology (Black)
	[Medtronic] ENDO GIA II 45 Cartridge (Blue, White, Gray)
	[Medtronic] ENDO GIA Reticulator 45 Cartridge (Blue, White, Gray)
	[Medtronic] ENDO GIA 45mm Articulating Medium/Thick Reload with Tri-Staple Technology (Purple)
NV-ET-M60A-2	[Medtronic] ENDO GIA 45mm Articulating Vascular/Medium Reload with Tri-Staple Technology (Tan)
	[Medtronic] ENDO GIA 45mm Articulating Vascular Reload with Tri-Staple Technology (Gray)
	[Medtronic] ENDO GIA II 60 Cartridge (Blue, White)
	[Medtronic] ENDO GIA Reticulator 60 Cartridge (Blue, White)
	[Medtronic] ENDO GIA 60mm Articulating Medium/Thick Reload with Tri-Staple Technology (Purple)
NV-ET-M45EZ-R	[Medtronic] ENDO GIA 60mm Articulating Vascular/Medium Reload with Tri-Staple Technology (Tan)
	[Medtronic] ENDO GIA 60mm Articulating Vascular Reload with Tri-Staple Technology (Gray)
NV-ET-M45E-R	[Johnson & Johnson] EZ 45mm Endocutter (Blue, Green)
	[Johnson & Johnson] ETS 45mm Endocutter
	[Johnson & Johnson] ETS Flex 45mm Endocutter
NV-ET-M30A-R	[Johnson & Johnson] ETS Compact-Flex 45mm Endocutter
	[Medtronic] ENDO GIA II 30 Cartridge
NV-ET-M30AI-R	[Medtronic] ENDO GIA Reticulator 30 Cartridge
	[Medtronic] ENDO GIA 30 Cartridge
NV-ET-M60AI-R	[Medtronic] ENDO GIA 60 Cartridge

The color in parentheses is the color of the cartridge attached to the stapler. It is not the color of NEOVEIL™.

GUNZE

NEOVEIL™ Sheet type
Product video



NEOVEIL™ Tube type
Product video



Distributor

GUNZE

GUNZE LIMITED. Medical Division
<http://www.gunze.co.jp/e/medical/>

◆ Europe

GUNZE INTERNATIONAL EUROPE GmbH
Oststrasse 80, 40210 DUESSELDORF, Germany
Tel: +49-211-3613-971
Fax: +49-211-3613-164
Email: info@gunze-intl.de

◆ Japan

AYABE FACTORY
46, Natsumegaichi, Aono-cho, Ayabe, KYOTO 623-8513, Japan
TOKYO OFFICE
Nihonbashi 2-10-4, Chuo-ku, TOKYO 103-0027, Japan
Tel: +81-3-3276-8718 Fax: +81-3-3276-8696

◆ Asia Pacific

GUNZE MEDICAL DEVICES (SHENZHEN) LIMITED
Room 802, Kerry Centre, 2008 Renminnan Rd., SHENZHEN 518001 P.R. China
Tel: +86-755-8230-0553 Fax: +86-755-8230-0469

◆ U.S.A.

GUNZE INTERNATIONAL USA, INCORPORATED
5 West 37th Street, Suite 800, New York, NY 10018, U.S.A.
Tel: +1-212-354-9060 Fax: +1-212-354-6171
Email: info@gunze-usa.com